

PERLE

LINKSTREAM

ISDN BRI Adaptor INSTALLATION

PART NUMBER: 5500042-13
FEB 2002

INSTALLATION OF THE ISDN MODULE IN YOUR LINKSTREAM UNIT

The module assembly consists of:

1 x ISDN assembly	1 x Disposable wrist strap
2 x 16mm nylon support pillar - snap in	1 x ISDN link cable (short)
1 x Installation guide (this document)	1 x Warranty card
1 x ISDN cable	

CAUTION

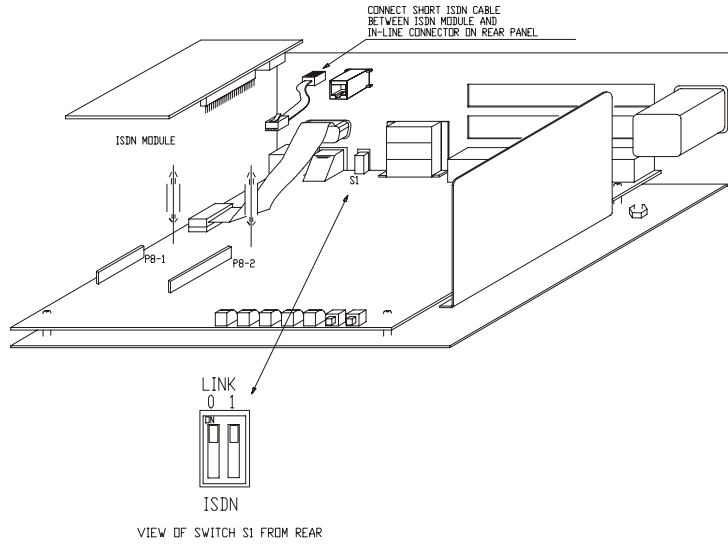
Installation of modules should be carried out by qualified service personnel only. The card contains static sensitive devices and must be handled using appropriate precautions to prevent static damage. A disposable wrist strap has been provided for this purpose.

To install the ISDN Module in a LINKSTREAM

- 1** Disconnect the power from the unit. Remove the 4 cover fixing screws.
- 2** Fit snap pillars (supplied) into locating holes in ISDN module.
- 3** Locate inter-board connectors on ISDN module into base card sockets -P8. Push module down to ensure a good connection. The snap fit pillars should now be firmly locked.
- 4** Connect ISDN module to pass through connector on rear of unit using short ISDN link cable supplied.
- 5** Selection of ISDN links can now be made using switch on rear panel. Selection of either of the ISDN channels will disable the corresponding serial link interfaces.
- 6** Replace cover and restore power to the unit.

INSTALLATION

LINKSTREAM - pass through connector method



GUIDE