

PER LE

LINKSTREAM

V.24 EXPANSION CARD INSTALLATION

PART NUMBER: 5500041-14

FEB 2002

INSTALLATION OF A V.24 EXPANSION CARD IN YOUR LINKSTREAM UNIT

The card assembly consists of:

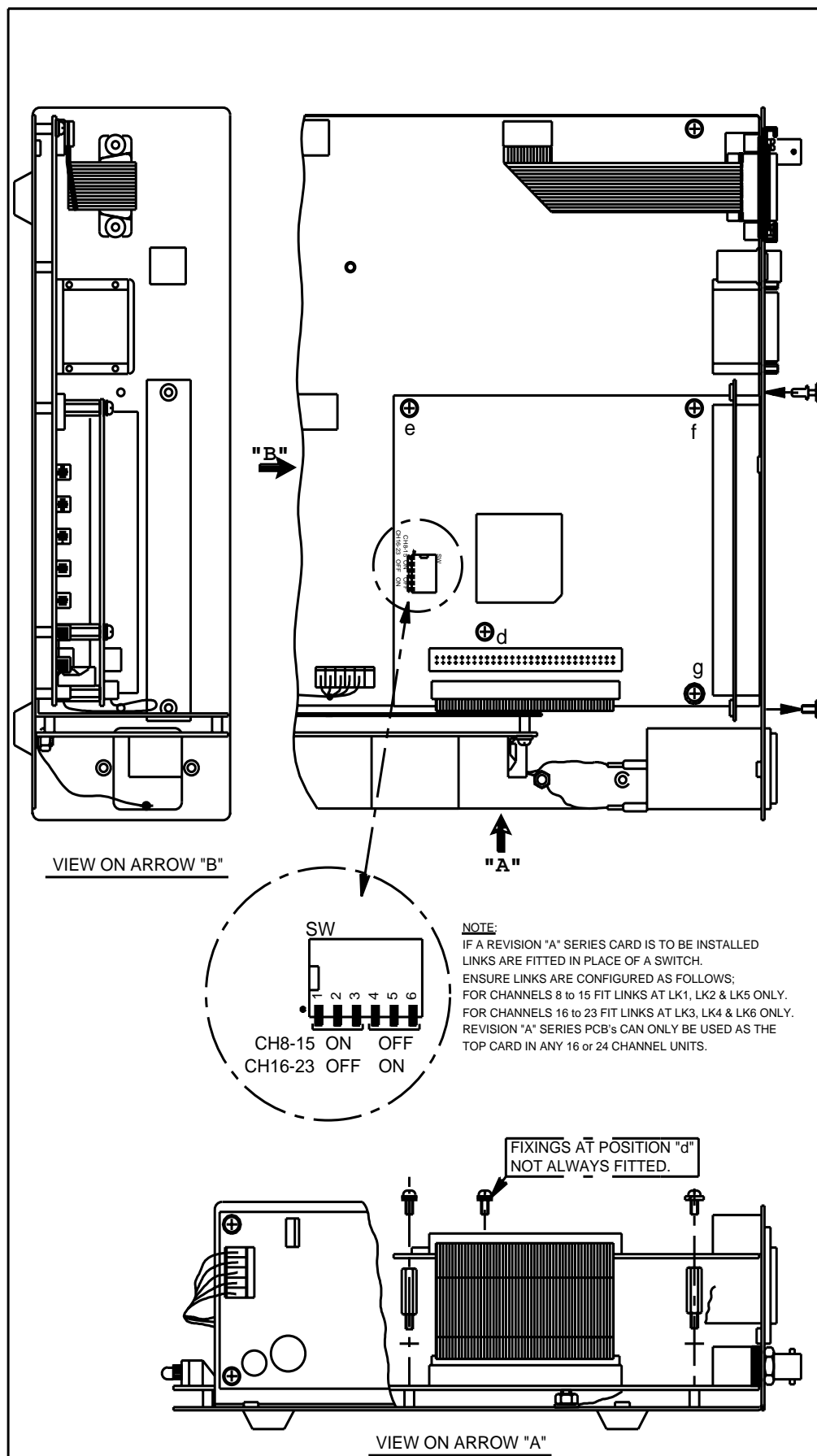
1	x	PCB assembly
4	x	M3 x 18mm pillars
1	x	Installation guide (this document)
2	x	Snap rivets
4	x	M3 shakeproof washers
1	x	Disposable wrist strap
1	x	Warranty Card

**CAUTION**  
**Installation of modules should be carried out by qualified service personel only.**  
 The card contains static sensitive devices and must be handled carefully using appropriate precautions to prevent static damage. Disposable wrist straps are included with the system for this purpose.

To install the expansion PCB:

- 1 Disconnect the power from the unit.  
Remove the 4 cover fixing screws.
- 2 Remove appropriate rear blanking panel by unscrewing the 2 panel fixing screws. (These items may be stored or discarded). Snap rivets to be used for blanking holes.
- 3 Remove the 4 fixing screws from the base card or existing expansion card, positions d (if fitted), e, f and g (see diagram overleaf). Retain for later use.
- 4 Replace screws with pillars and washers supplied.
- 5 Connect ribbon cable connector from expansion card into socket on board below. Fold cable to the side of the expansion card and position card onto pillars - secure with screws previously removed.
- 6 Set switch positions (SW) on expansion card -  
 First expansion card- channels 8-15 1,2,3 - ON 4,5,6 - OFF  
 Second expansion card- channels 16-23 1,2,3 - OFF 4,5,6 - ON
- 7 Replace cover, restore power to the unit and configure extra ports.

# INSTALLATION



# GUIDE