

Introduction

This guide covers the basic installation and configuration setup of the Perle 833IS Access Server. For further information please refer to the Perle 833IS user guide on the CDROM supplied with this product.

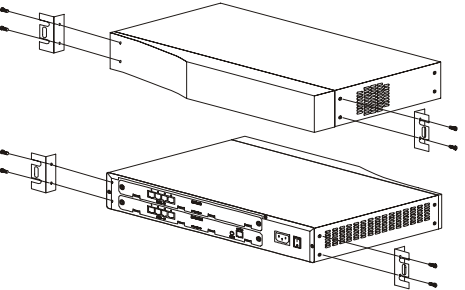
Installing your Perle 833IS

To install your Perle 833IS unit proceed as follows:.

- 1. Mount your Perle 833IS on a rack or desk as required.
- 2. Connect and plug in the power cord.
- 3. Power on the 833IS.

Rack mounting

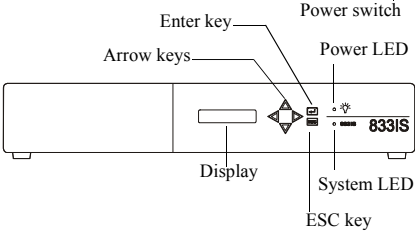
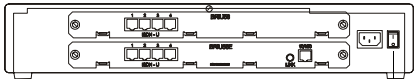
You can rack mount the unit using the kit provided.



Note  
The unit requires 1.5U rack mount space. Ensure there is sufficient clearance on the sides of the unit to allow adequate air flow to the internal fans.

Front and rear panel views

Note  
Some units only have one slot occupied depending on the cards supplied.



Key	Function
Enter key	Starts selected function or confirms data entry.
ESC key	Returns to previous menu or cancels command
Arrow keys	Moves cursor to navigate menus.

Connecting the unit to the LAN

To Set up the 833IS LAN connection:

- 1. Set the basic configuration from the Front Panel.
- 2. Power off the 833IS.
- 3. Attach the LAN cable to the LAN port on the 833IS unit.
- 4. Power on the 833IS.
- 5. Verify that the 833IS is attached to the network by checking that the LAN link LED is flashing (this LED is located beside the LAN connector).

Setting a valid IP address

To input the IP Address into the unit:

- 1. On the front panel, Press ► to display;  
**Manager setup**
- 2. Press ▼ to display:  
**IP Address**
- 3. To enter an IP address, press **Enter** to go to Edit mode and change each digit of the IP Address using the arrow keys until it displays the IP Address of the unit.  
**IP Address**  
**172.16.47.34**  
When completed, press **Enter** to accept.
- 4. Press ▼ then enter the IP subnet mask if required. To edit, press **Enter** to go to Edit mode and change each digit of the subnet mask using the arrow keys.  
**IP Subnet Mask**  
**255.255.0.0**  
When completed press **Enter** to accept.
- 5. Press ▼ then enter the default gateway address if applicable to your network configuration. This parameter is optional and if not applicable to your network environment proceed to step 6. To edit, press **Enter** to go to Edit mode and change each digit of the default gateway address using the arrow keys. When completed press **Enter** to accept.
- 6. Press ▼ ▼ to allow you to save the configuration as the startup configuration file.  
**Save Config?**  
Press **Enter**.  
**Confirm?**  
Press **Enter** to confirm and save the configuration to NVRAM.

Configuring the Perle 833IS

Note  
The default user ID for an unconfigured unit is:  
**superusr**. If this is the first time this unit is connecting to the Manager software you need to Download firmware to the unit.

You configure the 833IS with the 833IS Manager software supplied with the unit. The 833IS Manager is a 32 bit Microsoft Windows application that configures, monitors and manages 833IS Servers.

The Manager is not supported under Windows NT Server. It is fully supported under Windows NT Workstation.

Installing the Manager Software

To install the 833IS Manager software, follow these steps:

- 1. Locate the 833IS Manager software on the product CD-ROM.
- 2. Run the 833IS Manager software.
- 3. Follow the prompts that appear on the screen.

Connecting to the Server

No configuration is required for the Manager to communicate with a 833IS using IPX. However, the 833IS requires the following IP parameters to be set in order for the manager software to communicate over IP;

IP Address

IP Subnet Mask

IP Default Router Address (optional)

To connect to an 833IS unit, perform the following steps:

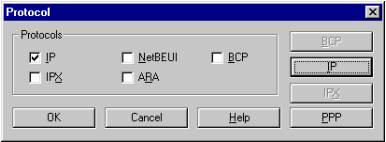
- 1. Start the Manager software.
- 2. From the Server List now displayed, select the server you wish to connect to over IPX. If you want to connect over IP, click on **Add IP Server**.
- 3. In the Add IP Server screen now displayed, enter the name of the Server in the Server Name field.
- 4. Enter the IP address of the Server in the **IP Address** field then click on **Add**.
- 5. Connect to the server and login as **superusr**.

Starting the Manager software

- 1. In the Windows desktop, click on  
Start>Programs>Perle833IS Manager>Perle833 Manager

Setting IP addresses

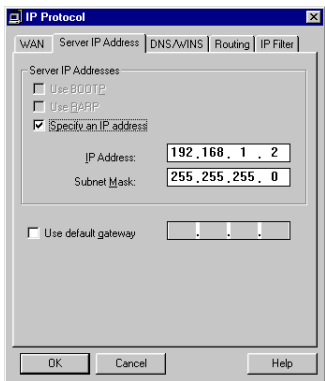
- 1. In the Manager window, click on the **New** button.
- 2. Within the Config screen now displayed, click on the **Protocol** button.



- 3. In the Protocol window now displayed, use the check boxes to select IP. Now click on the **IP** button.
- 4. In the IP protocol window now displayed, click on the WAN tab.



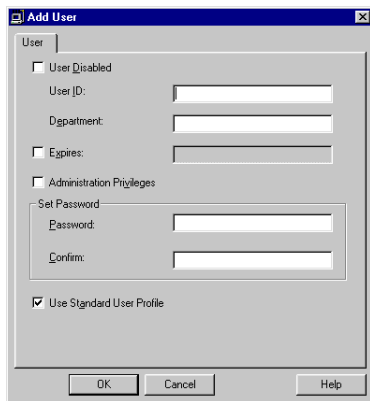
- 5. In the WAN page now displayed, enter the **IP Address** and **Subnet Mask** you require.
- 6. Select the IP address you want for users dialling into the network by checking either **DHCP** or **Use internal pool**.
- 7. If required, enable the **Allow client specified IP addresses** option.
- 8. In the IP protocol window, click on the **Server IP Address** tab.



9. In the Server IP Address page now displayed, enable the **Specify an IP address field**.
10. Enter the **IP Address** and **Subnet Mask** you require.
11. If you want users to route through a default gateway enable the **Use default gateway** field then enter the address you want to use.
12. Now click on the **OK** button in the main IP Protocol tabbed window to accept your changes.

## Configuring remote users

13. Within the Config screen, click the **User** button.
14. In the User window now displayed, click on the **Add** button to add a user.



15. In the Add User window now displayed, enter the ID and password parameters for the new user then click on **OK**.

### Note

You must add at least one user with Administrative privileges.

The default security authentication method is the local user database on the 833IS unit. To modify the security authentication method, see the 833IS User Guide on the CDROM supplied with this product.

## Saving and using your configuration

1. In the Manager config window click on the Save button.
2. In the Main Manager window, click on the **Configure > Download Configuration** menu option.
3. Now select **Entire Configuration** and click on the **OK** button to download the entire configuration to the 833IS unit.

You are now prompted to re-start the unit.

The unit now reboots, and is then ready to use.

## Configuration using the Cisco IOS

You can also configure your Perle 833IS using the Cisco IOS.

### Note

Once connected to the 833IS through a Telnet session, only the necessary set of commands are available and are listed in the help of your Telnet session by executing the **? command**.

After initial configuration of the 833IS unit using CISCO commands, you can download the operating firmware from the RAS Manager or TFTP server. Please ensure you select the appropriate download firmware for your unit as follows;

For 833IS S/T model, select **pcc6600s.img**

For 833IS U model, select **pcc6600u.img**

The RAS Manager will automatically download the appropriate operating firmware.

Downloading operating firmware to an 833IS unit model "U" using CISCO commands requires TFTP commands along with the IP Address of the PC running the TFTP server.

For example, with a TFTP server running on the PC with IP Address 172.17.6.16, the following command will download the new firmware image file pcc6600u.img from your PC to the *flash* volume on the unit:

**router #copy TFTP://172.17.6.16/pcc6600u.img**

**flash:new\_firmware.img**

You can now modify the 833IS configuration using various Cisco and Perle commands through the Command Line Interface via Telnet. You can store configuration text files and versions of firmware in flash and access them in a similar way to other Cisco products.

The new firmware image can now be loaded from the *flash* volume using the command;

**router(config)# boot system flash <filename>**

The new firmware will take effect on the next reload of the 833IS. To reload the 833IS by CISCO commands, issue the **reload** command from the telnet interface and the 833IS unit will automatically reboot.



Contacting Perle Technical Support
<p><i>Perle offers free technical support to Perle Authorised Distributors and Registered Perle Resellers.</i></p> <p><i>To access technical support please visit the Perle website at <a href="http://www.perle.com/support">www.perle.com/support</a>. Here you will find:</i></p> <ul style="list-style-type: none"> <li>• latest drivers and firmware updates for download</li> <li>• technical tips</li> <li>• frequently asked questions</li> <li>• documentation</li> <li>• configuration support</li> <li>• cabling information</li> <li>• maintenance contract information</li> <li>• and much more...</li> </ul> <p><i>If you are unable to find the information you require, please feel free to contact our technical support teams by email at:</i></p>
<b>USA</b>
<i>Email: <a href="mailto:ptac@perle.com">ptac@perle.com</a></i>
<b>Europe</b>
<i>Email: <a href="mailto:ptacemea@perle.com">ptacemea@perle.com</a></i>
<b>Asia</b>
<i>Email: <a href="mailto:ptacasia@perle.com">ptacasia@perle.com</a></i>
<b>Internet</b>
<i><a href="http://www.perle.com/support">www.perle.com/support</a></i>

Perle 833IS Quick Start Guide

Part No: 5500115-10

Copyright © Perle Systems Limited, 2002



# Perle 833IS

RAS Server

## Quick start guide



- Cisco IOS <sup>TM</sup>style command line configuration
- Central site dial-in remote access
- Dial-out modem pooling
- LAN to LAN routing