

Affinity Systems

VisiLink

910033-40
Rev. B

First Edition (October 1997)

THIS PUBLICATION IS PROVIDED "AS IS" WITHOUT WARRANTY OF ANY KIND, EITHER EXPRESS OR IMPLIED, INCLUDING, BUT NOT LIMITED TO, THE IMPLIED WARRANTIES OF MERCHANTABILITY OR FITNESS FOR A PARTICULAR PURPOSE. Some states do not allow disclaimer of express or implied warranties in certain transactions; therefore this statement may not apply to you.

This publication could include technical inaccuracies or typographical errors. Changes may be made to the information herein; these changes are incorporated into new editions of the publication. The manufacturer reserves the right to make improvements and/or changes in the product(s) and/or program(s) described in this publication at any time.

Copyright Perle Systems Limited, 1997-1999. All rights reserved.

Preface

This manual provides information needed to install, configure, and use the VisiLink software. VisiLink has been developed to be installed on an IBM or compatible personal computer (PC) running Microsoft Windows 95 or the Microsoft Windows NT operating system. This software, in conjunction with an IBM, or IBM compatible emulation card allows the PC to operate as an IBM 5250 workstation attached to any of the IBM midrange systems. A partial list of compatible adapters is located in appendix A.

This manual assumes familiarity with:

- Personal Computers, DOS, and Windows environments.
- The basic operation of 5250 terminals.
- The basic operation of S/3X or AS/400 systems.
- The general concepts of host communications.

If this is your first experience with PC emulation, you will find this manual especially useful. However, it also contains detailed information for the advanced user.

Please note: All the character codes of the keys and key combinations in this guide are based on the IBM PC AT enhanced keyboard (101-key) with the U.S. English language. If you elect to reconfigure your keyboard for a different character format, please be aware of any differences in the key assignments.

Screen and command examples are based on the AS/400. In the instances where S/3X computers differ, refer to your host manuals.

All trademarks are the property of their respective companies.

How This Manual Is Arranged

This manual is organized into six major sections:

Chapter 1. Overview

Lists the features of and requirements for running VisiLink.

Chapter 2. Getting Started

Lists the actions you should take before installing the programs.

Chapter 3. Installation

Provides step-by-step instructions for installing and un-installing the VisiLink software on your PC.

Chapter 4. Configuration

Describes the procedures for configuring display and printer emulation sessions.

Chapter 5. Display Emulation

Provides instructions for using display emulation sessions.

Chapter 6. Printer Emulation

Provides instructions for using the printer emulation session.

COMPLETE AND EXCLUSIVE STATEMENT OF AGREEMENT BETWEEN THE PARTIES AND SUPERSEDE ALL PROPOSALS OR PRIOR AGREEMENTS ORAL OR WRITTEN, AND ANY OTHER COMMUNICATIONS BETWEEN THE PARTIES RELATING TO THE SUBJECT MATTER OF THE LICENSE OR THE LIMITED WARRANTY.

Should you have any questions concerning the License or this Limited Warranty, or if you desire to contact Perle for any reason, please contact in writing Perle Systems Limited, Perle Systems Limited (Europe), 6 Cochran Close Crownhill, Milton Keynes, Buckinghamshire, U.K. MK8 0AJ.

Perle is a registered trademark of Perle Systems.

9.MISCELLANEOUS. This License is governed by the laws of England and shall benefit Perle Systems Limited, its successors and assigns.

Limited Warranty And Disclaimer Of Warranty

THE SOFTWARE AND ACCOMPANYING WRITTEN MATERIALS (INCLUDING INSTRUCTIONS FOR USE) ARE PROVIDED AS IS WITHOUT WARRANTY OF ANY KIND. FURTHER, PERLE AND ITS SUPPLIERS DO NOT WARRANT, GUARANTEE OR MAKE ANY REPRESENTATIONS REGARDING THE USE, OR THE RESULTS OF USE, OF THE SOFTWARE OR WRITTEN MATERIALS IN TERMS OF CORRECTNESS, ACCURACY, RELIABILITY, CURRENTNESS, OR OTHERWISE. THE ENTIRE RISK AS TO THE RESULTS AND PERFORMANCE OF THE SOFTWARE IS ASSUMED BY YOU. IF THE SOFTWARE OR WRITTEN MATERIALS ARE DEFECTIVE YOU, AND NOT PERLE OR ITS DEALERS, DISTRIBUTORS, AGENTS, OR EMPLOYEES, ASSUME THE ENTIRE COST OF ALL NECESSARY SERVICING, REPAIR, OR CORRECTION.

Perle warrants to their original LICENSEE that the disk(s) on which the SOFTWARE is recorded is free from defects in materials and workmanship under normal use and service for a period of 90 days from the date of delivery as evidenced by a copy of the receipt. Perle warrants to the original LICENSEE that the hardware (if any) accompanying the SOFTWARE is free from defects in materials and workmanship under normal use and service for a period of 90 days from the date of delivery as evidenced by a copy of the receipt. Perle's entire liability and your exclusive remedy as to the disk(s) or hardware shall be at Perle's option, either (a) return of the purchase price or (b) replacement of the disk or hardware which does not meet Perle's Limited Warranty and which is returned to Perle postage prepaid with a copy of the receipt. If failure of the disk or hardware has resulted from accident, abuse, or misapplication, Perle shall have no responsibility to replace the disk or hardware or refund the purchase price. In the event of replacement of the disk or hardware, the replacement disk or hardware will be warranted for the remainder of the original warranty period or thirty (30) days, whichever is longer.

THE ABOVE IS THE ONLY WARRANTY OF ANY KIND, EITHER EXPRESS OR IMPLIED, STATUTORY OR OTHERWISE, INCLUDING BUT NOT LIMITED TO THE IMPLIED WARRANTIES OF MERCHANTABILITY AND FITNESS FOR A PARTICULAR PURPOSE THAT IS MADE BY PERLE ON THIS PERLE PRODUCT. NO ORAL OR WRITTEN INFORMATION OR ADVICE GIVEN BY PERLE, ITS SUPPLIERS, DEALERS, DISTRIBUTORS, AGENTS OR EMPLOYEES SHALL CREATE A WARRANTY OR IN ANY WAY INCREASE THE SCOPE OF THIS WARRANTY AND YOU MAY NOT RELY ON ANY SUCH INFORMATION OR ADVICE. NEITHER PERLE NOR ANYONE ELSE WHO HAS BEEN INVOLVED IN THE CREATION, PRODUCTION OR DELIVERY OF THIS PRODUCT SHALL BE LIABLE FOR ANY DIRECT, INDIRECT, CONSEQUENTIAL OR INCIDENTAL DAMAGES (INCLUDING DAMAGES FOR LOSS OF BUSINESS PROFITS, BUSINESS INTERRUPTION, LOSS OF BUSINESS INFORMATION, AND THE LIKE) ARISING OUT OF THE USE OR INABILITY TO USE SUCH PRODUCT EVEN IF PERLE HAS BEEN ADVISED OF THE POSSIBILITY OF SUCH DAMAGES.

This Limited Warranty is governed and construed in accordance with the laws of England.

Acknowledgement

YOU ACKNOWLEDGE THAT YOU HAVE READ THIS LICENSE AND LIMITED WARRANTY, UNDERSTAND THEM, AND AGREE TO BE BOUND BY THEIR TERMS AND CONDITIONS. YOU ALSO AGREE THAT THE LICENSE AND LIMITED WARRANTY ARE THE

Table of Contents

Chapter 1 Overview	1-1
Features	1-1
Software Modules	1-2
System Requirements	1-3
Software	1-3
Hardware	1-3
Chapter 2 Getting Started	2-4
Package Inventory	2-4
Making A Working Backup from DOS	2-4
On Dual Floppy Disk Systems:	2-4
On Hard Disk Systems:	2-5
Expanded Memory Manager Setup	2-5
Windows 95:	2-5
Chapter 3 Installation/Removal	3-6
Overview	3-6
Installing VisiLink	3-6
Uninstalling VisiLink	3-9
Chapter 4 Configuration	4-10
Overview	4-10
Starting VisiLink software	4-10
Adapter Status Window	4-11
VisiLink Main Menu	4-12
Configure Emulation Adapter - Windows NT	4-14
Configure Emulation Adapter - Windows 95	4-15
Configure Keyboard and Language	4-17
Add or Edit Session	4-19
Chapter 5 Display Emulation	5-20
Overview	5-20
Using Display Emulation	5-20
Using the Mouse Buttons in a Session Window	5-21
Session Window Functions	5-22
Edit Copy	5-22
Edit Paste	5-22
Edit Paste Options	5-23
View Toolbar	5-23

View Status bar	5-24
View Attributes	5-25
Macro Record	5-25
Macro Pause	5-26
Macro Stop	5-26
Macro Play	5-27
Macro Delete	5-27
Print Screen (Local – Fixed Pitch)	5-28
Print Screen (Host)	5-29
Options\Hotspot Editor	5-29
Add Hotspots	5-31
Options\Attribute Editor	5-32
Options\Keyboard Mapper	5-33
Session Close	5-34
Session Close All	5-34
Chapter 6 Printer Emulation	6-35
Overview	6-35
Starting the Printer Emulation	6-35
Printer Emulation Control	6-37
Change Printer Setup	6-38
Emulation Parameters	6-39
Emulation Fonts, 5256, 5224/25, and 4214	6-43
Emulation Fonts, 5219 and 3812	6-44
Selecting PC Printer Fonts	6-47
Chapter 7 APPENDICIES	7-49
Appendix A	7-49

Agreement at all times during the use of the SOFTWARE, unless otherwise specified by Perle. Perle and its suppliers reserve all rights not expressly granted to LICENSEE.

2. OWNERSHIP OF SOFTWARE. *As the LICENSEE, you own the magnetic or other physical media on which the SOFTWARE is originally or subsequently recorded or fixed, but an express condition of this License is that Perle and its suppliers retain title and ownership of the SOFTWARE as recorded on the original disk copy(ies) and, or, as loaded in object code form on supplied product hardware and all subsequent copies of the SOFTWARE, regardless of the form or media in or on which the original and other copies may exist. This License is not a sale of the original SOFTWARE or any copy.*

3. COPY RESTRICTIONS. *The SOFTWARE and the accompanying written materials are the subject of copyright. Unauthorized copying of the SOFTWARE, including SOFTWARE which has been modified, merged, or included with other software, or of the written materials is expressly forbidden. You may be held legally responsible for any copyright infringement which is caused or encouraged by your failure to abide by the terms of this License. Subject to the restrictions above, and if the SOFTWARE is not copy-protected, you may make copies of the SOFTWARE solely for archival purposes. You must reproduce and include the Perle copyright notice on the archival copies.*

4. OTHER RESTRICTIONS. *You may not distribute copies of the SOFTWARE or accompanying written materials to others. You may not modify, adapt, translate, reverse engineer, decompile, disassemble, or create derivative works based on the written materials without the prior written consent of Perle.*

5. TRANSFER RESTRICTIONS. *This SOFTWARE is licensed only to you, the LICENSEE, and may not be transferred to anyone without the prior written consent of Perle. Any authorized transferee of the SOFTWARE shall be bound by the terms and conditions of this License and Limited Warranty. In no event may you transfer, assign, rent, lease, sell, or otherwise dispose of the SOFTWARE on a temporary or permanent basis except as expressly provided herein. LICENSEE may not export or re-export the SOFTWARE without the appropriate government licenses. LICENSEE further agrees that unless prior written authorization is obtained from the United States Government and from Perle, it will not knowingly export, directly or indirectly, the SOFTWARE to any destination or country to which export is prohibited by United States laws and/or regulations.*

6. DUAL MEDIA SOFTWARE. *If the SOFTWARE package contains both 3.5" and 5.25" diskettes, then the LICENSEE may use only the disks appropriate for the LICENSEE's single designated computer or network server. The LICENSEE may not use the other diskettes on another computer or computer network, or loan, rent, lease, or transfer them to another user, except as part of a transfer or other use as expressly permitted by this Perle License Agreement.*

7. TERMINATION. *This License is effective until terminated. This License will terminate automatically without notice from Perle if you fail to comply with any provision of this License. Upon termination you shall destroy the written materials and all copies of the SOFTWARE.*

8. UPDATE POLICY. *Perle may create, from time to time, updated versions of the SOFTWARE. At Perle's option, such updates may be available only on paying an update fee.*



Important - Read carefully before using the software

If you purchased your Affinity product in UNITED KINGDOM or EIRE, the following license agreement applies to you:

Software License And Limited Warranty

THIS LEGAL DOCUMENT IS AN AGREEMENT BETWEEN YOU, (either individual or entity), THE END USER, AND PERLE SYSTEMS LIMITED ("PERLE"). BY OPENING THE SEALED DISK PACKAGE OR BY USING THE SOFTWARE IN OBJECT CODE FORM AS SUPPLIED BY PERLE AND ITS SUPPLIERS, YOU ARE AGREEING THAT YOU AND ALL OF YOUR EMPLOYEES SHALL BE BOUND BY THE TERMS OF THIS AGREEMENT, WHICH INCLUDES THE SOFTWARE LICENSE, LIMITED WARRANTY and ACKNOWLEDGEMENT. If this SOFTWARE is an UPGRADE or TRADE-UP from a previous version of a PERLE PRODUCT, PERLE grants you the right to use either the current or prior versions of the SOFTWARE but not both. Your prior version LICENSE is REPLACED by this LICENSE AGREEMENT to the extent the version of the SOFTWARE you elect to use is the upgrade provided with this LICENSE AGREEMENT.

IF YOU DO NOT AGREE TO THE TERMS OF THIS AGREEMENT, DO NOT OPEN THE DISK PACKAGE OR USE THE SOFTWARE. PROMPTLY RETURN THE UNOPENED DISK PACKAGE AND, OR OTHER ITEMS (INCLUDING WRITTEN MATERIALS, BINDERS OR OTHER CONTAINERS, AND HARDWARE, IF ANY) WHICH ARE PART OF THIS PRODUCT TO THE PLACE WHERE YOU OBTAINED THEM FOR A FULL REFUND.

In order to preserve and protect its rights under applicable laws, Perle does not sell any rights in Perle SOFTWARE. Rather, Perle and its suppliers grant the right to use Perle SOFTWARE by means of a SOFTWARE LICENSE. Perle and its suppliers specifically retain title to all Perle-supplied computer software.

Perle Software License

1. GRANT OF LICENSE. *In consideration of payment of the License fee which is a part of the price you paid for this product, and your agreement to abide by the terms and conditions of this License and the Limited Warranty, Perle, as Licensor, grants to you, the LICENSEE, a non-exclusive license to use the software supplied by Perle and its suppliers (hereinafter the "SOFTWARE") in object code form, solely on a single COMPUTER at a single location so long as you comply with the terms of this License. If the single computer on which you use the SOFTWARE is also on a Local Area Network, the license covers all users on that network provided that the LICENSEE requires each user of the SOFTWARE on the network to have physical possession of an original Perle License*

Chapter 1 Overview

VisiLink allows an IBM or compatible PC to communicate with an IBM midrange computer via a twinax connection. The program emulates a broad range of IBM 5250 terminals and printers. VisiLink utilizes the video and printer drivers of Microsoft Windows and supports all the display adapters and printers supported by Windows.

Features

- Support 2 sessions with IBM or IBM compatible adapters, or up to 7 sessions with PCI Express compatible adapter. See Appendix A.
- 5250 Terminal Emulation including all the features and special display attributes of the 5250 terminals.
- Operates on any IBM-compatible PC with Microsoft Windows 95 or NT.
- Enhancement of 5250 terminal functions with:
 - Toolbars
 - Mouse support
 - Hot spots
 - Macro record and playback
 - Clipboard copy and paste functions
- 5256, 5224/25, 4214, 5219, and 3812 printer emulations.
- On-line user manual/context-sensitive help.

Software Modules

The VisiLink package is comprised of two modules.

- **Installation Module:** The InstallShield software that creates the necessary directories, transferring and decompressing files, etc. Run the *Setup* program when you need to install the VisiLink package.
- **Main Module:** The VisiLink software can be broadly classified into the following categories...
 - **Configuration:** The Main menu allows you to configure keyboard language & layout, and the session type (display or printer). It also determines the adapter Board Type and allows you to modify the Memory Address, I/O Port Address, and the Interrupt Level.
 - **Display Emulation:** A display session can be started from the Main menu (or other active sessions) if you have a valid display configuration. The display session emulates the 5250 display and the enhanced 5250 terminal functions described above. Other features supported by the display emulation are:

Keyboard Remapping

Display Attribute mapping
 - **Printer Emulation:** A printer session can be started from the Main menu (or other active sessions) if you have a valid printer configuration. The printer session emulates the 5250 printer emulations listed above.

In addition to these programs the package includes various utilities and support files.

OTHER COMMUNICATIONS BETWEEN THE PARTIES RELATING TO THE SUBJECT MATTER OF THE LICENSE OR THE LIMITED WARRANTY.

*Should you have any questions concerning the License or this Limited Warranty, or if you desire to contact Perle for any reason, please contact in writing
Perle Systems Limited, 60 Renfrew Drive, Markham, Ontario L3R 0E1 CANADA. Perle is a registered trademark of Perle Systems.*

SOFTWARE OR WRITTEN MATERIALS IN TERMS OF CORRECTNESS, ACCURACY, RELIABILITY, CURRENTNESS, OR OTHERWISE. THE ENTIRE RISK AS TO THE RESULTS AND PERFORMANCE OF THE SOFTWARE IS ASSUMED BY YOU. IF THE SOFTWARE OR WRITTEN MATERIALS ARE DEFECTIVE YOU, AND NOT PERLE OR ITS DEALERS, DISTRIBUTORS, AGENTS, OR EMPLOYEES, ASSUME THE ENTIRE COST OF ALL NECESSARY SERVICING, REPAIR, OR CORRECTION.

Perle warrants to their original LICENSEE that the disk(s) on which the SOFTWARE is recorded is free from defects in materials and workmanship under normal use and service for a period of 90 days from the date of delivery as evidenced by a copy of the receipt. Perle warrants to the original LICENSEE that the hardware (if any) accompanying the SOFTWARE is free from defects in materials and workmanship under normal use and service for a period of 90 days from the date of delivery as evidenced by a copy of the receipt. Perle's entire liability and your exclusive remedy as to the disk(s) or hardware shall be at Perle's option, either (a) return of the purchase price or (b) replacement of the disk or hardware which does not meet Perle's Limited Warranty and which is returned to Perle postage prepaid with a copy of the receipt. If failure of the disk or hardware has resulted from accident, abuse, or misapplication, Perle shall have no responsibility to replace the disk or hardware or refund the purchase price. In the event of replacement of the disk or hardware, the replacement disk or hardware will be warranted for the remainder of the original warranty period or thirty (30) days, whichever is longer.

THE ABOVE IS THE ONLY WARRANTY OF ANY KIND, EITHER EXPRESS OR IMPLIED, STATUTORY OR OTHERWISE, INCLUDING BUT NOT LIMITED TO THE IMPLIED WARRANTIES OF MERCHANTABILITY AND FITNESS FOR A PARTICULAR PURPOSE THAT IS MADE BY PERLE ON THIS PERLE PRODUCT. NO ORAL OR WRITTEN INFORMATION OR ADVICE GIVEN BY PERLE, ITS DEALERS, DISTRIBUTORS, AGENTS OR EMPLOYEES SHALL CREATE A WARRANTY OR IN ANY WAY INCREASE THE SCOPE OF THIS WARRANTY AND YOU MAY NOT RELY ON ANY SUCH INFORMATION OR ADVICE. NEITHER PERLE NOR ANYONE ELSE WHO HAS BEEN INVOLVED IN THE CREATION, PRODUCTION OR DELIVERY OF THIS PRODUCT SHALL BE LIABLE FOR ANY DIRECT, INDIRECT, CONSEQUENTIAL OR INCIDENTAL DAMAGES (INCLUDING DAMAGES FOR LOSS OF BUSINESS PROFITS, BUSINESS INTERRUPTION, LOSS OF BUSINESS INFORMATION, AND THE LIKE) ARISING OUT OF THE USE OR INABILITY TO USE SUCH PRODUCT EVEN IF PERLE HAS BEEN ADVISED OF THE POSSIBILITY OF SUCH DAMAGES. THIS WARRANTY GIVES YOU SPECIFIC RIGHTS. YOU MAY HAVE OTHER RIGHTS WHICH VARY FROM PROVINCE TO PROVINCE AND CERTAIN LIMITATIONS CONTAINED IN THIS LIMITED WARRANTY MAY NOT APPLY TO YOU. IN THE EVENT OF ANY CONFLICT BETWEEN ANY PROVISION IN THIS LIMITED WARRANTY AND ANY APPLICABLE PROVINCIAL LEGISLATION, THE APPLICABLE PROVINCIAL LEGISLATION TAKES PRECEDENCE OVER THE CONTRAVENING PROVISION.

This Limited Warranty is governed by the laws of the Province of Ontario and shall benefit Perle, its successors and assigns.

Acknowledgement

YOU ACKNOWLEDGE THAT YOU HAVE READ THIS LICENSE AND LIMITED WARRANTY, UNDERSTAND THEM, AND AGREE TO BE BOUND BY THEIR TERMS AND CONDITIONS. YOU ALSO AGREE THAT THE LICENSE AND LIMITED WARRANTY ARE THE COMPLETE AND EXCLUSIVE STATEMENT OF AGREEMENT BETWEEN THE PARTIES AND SUPERSEDE ALL PROPOSALS OR PRIOR AGREEMENTS ORAL OR WRITTEN, AND ANY

System Requirements

Software

- Microsoft Windows 95, Windows NT 3.51, or Windows NT 4.0
- Windows printer drivers for the selected printers

Hardware

- 4MB RAM or minimum required to run Windows
- 80386SX or better processor
- IBM compatible 5250 emulation adapter

Chapter 2 Getting Started

This chapter describes the materials you should have and the necessary steps to perform before installing the VisiLink program.

Package Inventory

The following items are included in the VisiLink package:

- This manual.
- Two 3.5" diskettes.

If any items are damaged or missing, contact your place of purchase for information on repair or replacement.

Note: It is strongly recommended that you make a backup set of the VisiLink diskettes prior to performing the install operation. Your DOS or Windows Operating System Manual provides information on how to format a diskette and copy files on the PC.

Making A Working Backup from DOS

On Dual Floppy Disk Systems:

Place disk 1 of the VisiLink diskettes into the 'A:' drive and a blank diskette in the 'B:' drive. Use the DOS "DISKCOPY" command shown below to initiate the copy process.

```
A:>DISKCOPY A: B: <Enter>
```

Repeat the above process for any additional diskettes.

2. **OWNERSHIP OF SOFTWARE.** As the *LICENSEE*, you own the magnetic or other physical media on which the *SOFTWARE* is originally or subsequently recorded or fixed, but an express condition of this License is that Perle and its suppliers retain title and ownership of the *SOFTWARE* as recorded on the original disk copy(ies) and, or, as loaded in object code form on supplied product hardware, all subsequent copies of the *SOFTWARE*, regardless of the form or media in or on which the original and other copies may exist. This License is not a sale of the original *SOFTWARE* or any copy.

3. **COPY RESTRICTIONS.** The *SOFTWARE* and the accompanying written materials are copyrighted. Unauthorized copying of the *SOFTWARE*, including *SOFTWARE* which has been modified, merged, or included with other software, or of the written materials is expressly forbidden. You may be held legally responsible for any copyright infringement which is caused or encouraged by your failure to abide by the terms of this License. Subject to the restrictions above, and if the *SOFTWARE* is not copy-protected, you may make copies of the *SOFTWARE* solely for archival purposes. You must reproduce and include the Perle copyright notice on the archival copies.

4. **OTHER RESTRICTIONS.** You may not distribute copies of the *SOFTWARE* or accompanying written materials to others. You may not modify, adapt, translate, reverse engineer, decompile, disassemble, or create derivative works based on the written materials without the prior written consent of Perle.

5. **TRANSFER RESTRICTIONS.** This *SOFTWARE* is licensed only to you, the *LICENSEE*, and may not be transferred to anyone without the prior written consent of Perle. Any authorized transferee of the *SOFTWARE* shall be bound by the terms and conditions of this License and Limited Warranty. In no event may you transfer, assign, rent, lease, sell, or otherwise dispose of the *SOFTWARE* on a temporary or permanent basis except as expressly provided herein. *LICENSEE* may not export or re-export the *SOFTWARE* without the appropriate government licenses. *LICENSEE* further agrees that unless prior written authorization is obtained from the United States Government and from Perle, it will not knowingly export, directly or indirectly, the *SOFTWARE* to any destination or country to which export is prohibited by United States laws and/or regulations.

6. **DUAL MEDIA SOFTWARE.** If the *SOFTWARE* package contains both 3.5" and 5.25" diskettes, then the *LICENSEE* may use only the disks appropriate for the *LICENSEE*'s single designated computer or network server. The *LICENSEE* may not use the other diskettes on another computer or computer network, or loan, rent, lease, or transfer them to another user, except as part of a transfer or other use as expressly permitted by this Perle License Agreement.

7. **TERMINATION.** This License is effective until terminated. This License will terminate automatically without notice from Perle if you fail to comply with any provision of this License. Upon termination you shall destroy the written materials and all copies of the *SOFTWARE*.

8. **UPDATE POLICY.** Perle may create, from time to time, updated versions of the *SOFTWARE*. At Perle's option, such updates may be available only on paying an update fee.

9. **MISCELLANEOUS.** This License is governed by the laws of the Province of Ontario and shall benefit Perle Systems, its successors and assigns. *LICENSEE* consents to jurisdiction in the Provincial and federal courts located in the Province of Ontario.

LIMITED WARRANTY

THE *SOFTWARE* AND ACCOMPANYING WRITTEN MATERIALS (INCLUDING INSTRUCTIONS FOR USE) ARE PROVIDED AS IS WITHOUT WARRANTY OF ANY KIND. FURTHER, PERLE AND ITS SUPPLIERS DO NOT WARRANT, GUARANTEE OR MAKE ANY REPRESENTATIONS REGARDING THE USE, OR THE RESULTS OF USE, OF THE



Important - Read carefully before using the software

If you purchased your Affinity product in CANADA, the following license agreement applies to

you:

Software License And Limited Warranty

THIS LEGAL DOCUMENT IS AN AGREEMENT BETWEEN YOU, (either individual or entity), THE END USER, AND PERLE SYSTEMS LIMITED ("PERLE"). BY OPENING THE SEALED DISK PACKAGE, OR BY USING THE SOFTWARE IN OBJECT CODE FORM AS SUPPLIED BY PERLE AND ITS SUPPLIERS, YOU ARE AGREEING TO BECOME BOUND BY THE TERMS OF THIS AGREEMENT, WHICH INCLUDES THE SOFTWARE LICENSE, LIMITED WARRANTY and ACKNOWLEDGEMENT. If this SOFTWARE is an UPGRADE or TRADE-UP from a previous version of a PERLE PRODUCT, PERLE grants you the right to use either the current or prior versions of the SOFTWARE and any prior version LICENSE is REPLACED in its entirety and shall henceforth be governed in all respects by this LICENSE AGREEMENT.

IF YOU DO NOT AGREE TO THE TERMS OF THIS AGREEMENT, DO NOT OPEN THE DISK PACKAGE OR USE THE SOFTWARE. PROMPTLY RETURN THE UNOPENED DISK PACKAGE AND, OR, OTHER ITEMS (INCLUDING WRITTEN MATERIALS, BINDERS OR OTHER CONTAINERS, AND HARDWARE, IF ANY) WHICH ARE PART OF THIS PRODUCT TO THE PLACE WHERE YOU OBTAINED THEM FOR A FULL REFUND.

In order to preserve and protect its rights under applicable laws, Perle does not sell any rights in Perle SOFTWARE. Rather, Perle and its suppliers grant the right to use Perle SOFTWARE by means of a SOFTWARE LICENSE. Perle and its suppliers specifically retain title to all Perle-supplied computer software.

Perle Software License

1. GRANT OF LICENSE. *In consideration of payment of the License fee which is a part of the price you paid for this product, and your agreement to abide by the terms and conditions of this License and the Limited Warranty, Perle, as Licensor, grants to you, the LICENSEE, a non-exclusive license to use the software supplied by Perle and its suppliers (hereinafter the "SOFTWARE") in object code form, solely on a single COMPUTER owned or leased by you at a single location so long as you comply with the terms of this License. If the single computer on which you use the SOFTWARE is also on a Local Area Network, the license covers all users on that network provided that the LICENSEE requires each user of the SOFTWARE on the network to have physical possession of an original Perle License Agreement at all times during the use of the SOFTWARE, unless otherwise specified by Perle.*

Perle and its suppliers reserves all rights not expressly granted to LICENSEE.

On Hard Disk Systems:

Create a directory on the hard disk using the DOS "MKDIR" command as shown below:

```
C:>MKDIR directoryname <Enter>
```

Use the DOS "COPY" command to copy the files on disk 1 into the newly created directory as shown below:

```
C:>COPY [drive]:*.* directoryname <Enter >
```

Repeat this procedure for any additional diskettes but with a different directory name for each. Record the information on where you have located the backup directories and store the original diskettes in a safe place.

Expanded Memory Manager Setup

Windows 95:

Use of an expanded memory manager such as EMM386 or QEMM386 is not recommended with Windows 95 since an expanded memory manager is an integral part of Windows 95. Remove the line that loads the extended memory manager from your CONFIG.SYS file. You may also "comment out" the line by adding REM<space> to the beginning of it.

```
REM device=c:\qemm\qemm386.sys ...
```

OR

```
REM device=<path>emm386.exe ...
```

Chapter 3 Installation/Removal

Overview

The VisiLink *Setup* program performs the following functions:

- Creates a new program group.
- Creates a new directory in which to load the VisiLink programs.
- Creates a new directory in which to load the Utility programs.
- Loads the Utility Programs and VisiLink programs and support files into the newly created directories.

Refer to the *Hardware User's Manual* for your emulation adapter board for information on installing and configuring your 5250 emulation adapter in your PC.

Installing VisiLink

Before running the *Setup* program, exit all other Windows applications.

When running Windows NT 3.51

Insert the VisiLink Diskette #1 in the diskette drive of the PC. Select Run from the File menu of the Program Manager and type

<drive>:\setup

in the command line field. Press OK.

When running Windows 95 or Windows 4.0

Insert the VisiLink Diskette #1 in the diskette drive of the PC. select Start, select Run and type

<drive>:\setup

In the Open field. Press OK.

Acknowledgement

YOU ACKNOWLEDGE THAT YOU HAVE READ THIS LICENSE AND LIMITED WARRANTY, UNDERSTAND THEM, AND AGREE TO BE BOUND BY THEIR TERMS AND CONDITIONS. YOU ALSO AGREE THAT THE LICENSE AND LIMITED WARRANTY ARE THE COMPLETE AND EXCLUSIVE STATEMENT OF AGREEMENT BETWEEN THE PARTIES AND SUPERSEDE ALL PROPOSALS OR PRIOR AGREEMENTS ORAL OR WRITTEN, AND ANY OTHER COMMUNICATIONS BETWEEN THE PARTIES RELATING TO THE SUBJECT MATTER OF THE LICENSE OR THE LIMITED WARRANTY.

*Should you have any questions concerning the License or this Limited Warranty, or if you desire to contact Perle for any reason, please contact in writing
Perle Systems Limited, 60 Renfrew Drive, Markham, Ontario L3R 0E1 CANADA.*

Perle is a registered trademark of Perle Systems.

Limited Warranty

THE SOFTWARE AND ACCOMPANYING WRITTEN MATERIALS (INCLUDING INSTRUCTIONS FOR USE) ARE PROVIDED AS IS WITHOUT WARRANTY OF ANY KIND. FURTHER, PERLE AND ITS SUPPLIERS DO NOT WARRANT, GUARANTEE OR MAKE ANY REPRESENTATIONS REGARDING THE USE, OR THE RESULTS OF USE, OF THE SOFTWARE OR WRITTEN MATERIALS IN TERMS OF CORRECTNESS, ACCURACY, RELIABILITY, CURRENTNESS, OR OTHERWISE. THE ENTIRE RISK AS TO THE RESULTS AND PERFORMANCE OF THE SOFTWARE IS ASSUMED BY YOU. IF THE SOFTWARE OR WRITTEN MATERIALS ARE DEFECTIVE YOU, AND NOT PERLE OR ITS DEALERS, DISTRIBUTORS, AGENTS, OR EMPLOYEES, ASSUME THE ENTIRE COST OF ALL NECESSARY SERVICING, REPAIR, OR CORRECTION.

Perle warrants to their original LICENSEE that the disk(s) on which the SOFTWARE is recorded is free from defects in materials and workmanship under normal use and service for a period of 90 days from the date of delivery as evidenced by a copy of the receipt. Perle warrants to the original LICENSEE that the hardware (if any) accompanying the SOFTWARE is free from defects in materials and workmanship under normal use and service for a period of 90 days from the date of delivery as evidenced by a copy of the receipt. Perle's entire liability and your exclusive remedy as to the disk(s) or hardware shall be at Perle's option, either (a) return of the purchase price or (b) replacement of the disk or hardware which does not meet Perle's Limited Warranty and which is returned to Perle postage prepaid with a copy of the receipt. If failure of the disk or hardware has resulted from accident, abuse, or misapplication, Perle shall have no responsibility to replace the disk or hardware or refund the purchase price. In the event of replacement of the disk or hardware, the replacement disk or hardware will be warranted for the remainder of the original warranty period or thirty (30) days, whichever is longer.

THE ABOVE IS THE ONLY WARRANTY OF ANY KIND, EITHER EXPRESS OR IMPLIED, STATUTORY OR OTHERWISE, INCLUDING BUT NOT LIMITED TO THE IMPLIED WARRANTIES OF MERCHANTABILITY AND FITNESS FOR A PARTICULAR PURPOSE THAT IS MADE BY PERLE ON THIS PERLE PRODUCT. NO ORAL OR WRITTEN INFORMATION OR ADVICE GIVEN BY PERLE, ITS SUPPLIERS, DEALERS, DISTRIBUTORS, AGENTS OR EMPLOYEES SHALL CREATE A WARRANTY OR IN ANY WAY INCREASE THE SCOPE OF THIS WARRANTY AND YOU MAY NOT RELY ON ANY SUCH INFORMATION OR ADVICE. NEITHER PERLE NOR ANYONE ELSE WHO HAS BEEN INVOLVED IN THE CREATION, PRODUCTION OR DELIVERY OF THIS PRODUCT SHALL BE LIABLE FOR ANY DIRECT, INDIRECT, CONSEQUENTIAL OR INCIDENTAL DAMAGES (INCLUDING DAMAGES FOR LOSS OF BUSINESS PROFITS, BUSINESS INTERRUPTION, LOSS OF BUSINESS INFORMATION, AND THE LIKE) ARISING OUT OF THE USE OR INABILITY TO USE SUCH PRODUCT EVEN IF PERLE HAS BEEN ADVISED OF THE POSSIBILITY OF SUCH DAMAGES. THIS WARRANTY GIVES YOU SPECIFIC RIGHTS. YOU MAY HAVE OTHER RIGHTS WHICH VARY FROM PROVINCE TO PROVINCE AND CERTAIN LIMITATIONS CONTAINED IN THIS LIMITED WARRANTY MAY NOT APPLY TO YOU. IN THE EVENT OF ANY CONFLICT BETWEEN ANY PROVISION IN THIS LIMITED WARRANTY AND ANY APPLICABLE PROVINCIAL LEGISLATION, THE APPLICABLE PROVINCIAL LEGISLATION TAKES PRECEDENCE OVER THE CONTRAVENING PROVISION.

This Limited Warranty is governed by the laws of the Province of Ontario and shall benefit Perle, its successors and assigns.

Install displays a series of dialog boxes containing fields to customize the installation. You may press cancel at any time to exit the Install program.

1. Install displays a Welcome screen which displays copyright information and other information; click on Next to continue the installation, or click on Cancel to stop the installation.
2. Install displays a registration screen which allows you to enter Your Name and Company Name. Please enter this information and select Next to continue the installation.
3. Install displays the default directory for installation of the VisiLink software. To accept this directory Click Next or use Browse to find and select an alternate directory. If the directory does not exist Install will prompt you for permission to create the directory. **Note:** If the directory already exists, Install will overwrite any files in the directory which have the same file name.
4. On the next screen, select the 5250 Emulation Adapter type for the adapter installed in your PC. Click Next to continue. The next step is not valid for Windows NT installation.
5. The Destination directory field now specifies the directory where the Utility Programs and files will be installed. You can use the default directory, C:\5250CARD, or to choose another directory, click on Browse and select or type in the directory for the Utility Programs and files. Click Next to continue.

Note: If the directory already exists, the Install program will overwrite the contents of that directory. If the directory does not exist, Install will ask for permission to create it.

6. The Program Folders field now specifies the name of the folder where the program icons will be added. Click Next to continue or Select from one of the existing folders and then Click Next.
7. Review the choices you have made for the installation. If you wish to change any of your choices, click on Back until the choice you wish to change is displayed. Make the change and click on Next until

the Review dialog is displayed. Click Next to begin copying files to the destination directories.

8. Insert Disk #2 and click OK when prompted.
9. If you are running Windows 95 and selected the MicroPlus card, the prompt to run the "Add New Hardware Wizard" is displayed. If you select "Yes", remove disk #2 and insert disk #1. Follow the prompts. If you are running Windows 95 and selected the Plug 'N Play or PC card then click on OK.
10. After Install has copied all of the files to the destination directories the program will prompt for permission to update your AUTOEXEC.BAT file. Click Yes to update the file now. Otherwise, click No.
11. Click on Finish to display the README.TXT file which contains information specific to this release of the VisiLink. After reviewing the information, select Exit from the File menu.
12. Remove the Installation diskette from the drive and click on OK. Then click Yes to Reboot your PC.

The VisiLink program is now available. Your next step is to configure devices from the VisiLink Main Menu as described in *Chapter 4, Configuration*.

2. **OWNERSHIP OF SOFTWARE.** *As the LICENSEE, you own the magnetic or other physical media on which the SOFTWARE is originally or subsequently recorded or fixed, but an express condition of this License is that Perle and its suppliers retain title and ownership of the SOFTWARE as recorded on the original disk copy(ies) and, or, as loaded in object code form on supplied product hardware and all subsequent copies of the SOFTWARE, regardless of the form or media in or on which the original and other copies may exist. This License is not a sale of the original SOFTWARE or any copy.*

3. **COPY RESTRICTIONS.** *The SOFTWARE and the accompanying written materials are copyrighted. Unauthorized copying of the SOFTWARE, including SOFTWARE which has been modified, merged, or included with other software, or of the written materials is expressly forbidden. You may be held legally responsible for any copyright infringement which is caused or encouraged by your failure to abide by the terms of this License. Subject to the restrictions above, and if the SOFTWARE is not copy-protected, you may make copies of the SOFTWARE solely for archival purposes. You must reproduce and include the Perle copyright notice on the archival copies.*

4. **OTHER RESTRICTIONS.** *You may not distribute copies of the SOFTWARE or accompanying written materials to others. You may not modify, adapt, translate, reverse engineer, decompile, disassemble, or create derivative works based on the written materials without the prior written consent of Perle.*

5. **TRANSFER RESTRICTIONS.** *This SOFTWARE is licensed only to you, the LICENSEE, and may not be transferred to anyone without the prior written consent of Perle. Any authorized transferee of the SOFTWARE shall be bound by the terms and conditions of this License and Limited Warranty. In no event may you transfer, assign, rent, lease, sell, or otherwise dispose of the SOFTWARE on a temporary or permanent basis except as expressly provided herein. LICENSEE may not export or re-export the SOFTWARE without the appropriate government licenses. LICENSEE further agrees that unless prior written authorization is obtained from the United States Government and from Perle, it will not knowingly export, directly or indirectly, the SOFTWARE to any destination or country to which export is prohibited by United States laws and/or regulations.*

6. **DUAL MEDIA SOFTWARE.** *If the SOFTWARE package contains both 3.5" and 5.25" diskettes, then the LICENSEE may use only the disks appropriate for the LICENSEE's single designated computer or network server. The LICENSEE may not use the other diskettes on another computer or computer network, or loan, rent, lease, or transfer them to another user, except as part of a transfer or other use as expressly permitted by this Perle License Agreement.*

7. **TERMINATION.** *This License is effective until terminated. This License will terminate automatically without notice from Perle if you fail to comply with any provision of this License. Upon termination you shall destroy the written materials and all copies of the SOFTWARE.*

8. **UPDATE POLICY.** *Perle may create, from time to time, updated versions of the SOFTWARE. At Perle's option, such updates may be available only on paying an update fee.*

9. **MISCELLANEOUS.** *This License is governed by the laws of the Province of Ontario and shall benefit Perle Systems, its successors and assigns. LICENSEE consents to jurisdiction in the Provincial and federal courts located in the Province of Ontario.*



Important - Read carefully before using the software

If you purchased your Affinity product in any country other than Canada, Eire, United Kingdom, or the United States, the following license agreement applies to you:

Software License And Limited Warranty

THIS LEGAL DOCUMENT IS AN AGREEMENT BETWEEN YOU, (either individual or entity), THE END USER, AND PERLE SYSTEMS LIMITED ("PERLE"). BY OPENING THE SEALED DISK PACKAGE, OR BY USING THE SOFTWARE IN OBJECT CODE FORM AS SUPPLIED BY PERLE AND ITS SUPPLIERS, YOU ARE AGREEING TO BECOME BOUND BY THE TERMS OF THIS AGREEMENT, WHICH INCLUDES THE SOFTWARE LICENSE, LIMITED WARRANTY AND ACKNOWLEDGEMENT. If this SOFTWARE is an UPGRADE or TRADE-UP from a previous version of a PERLE PRODUCT, PERLE grants you the right to use either the current or prior versions of the SOFTWARE and any prior version LICENSE is REPLACED in its entirety and shall henceforth be governed in all respects by this LICENSE AGREEMENT.

IF YOU DO NOT AGREE TO THE TERMS OF THIS AGREEMENT, DO NOT OPEN THE DISK PACKAGE OR USE THE SOFTWARE. PROMPTLY RETURN THE UNOPENED DISK PACKAGE AND, OR, THE OTHER ITEMS (INCLUDING WRITTEN MATERIALS, BINDERS OR OTHER CONTAINERS, AND HARDWARE, IF ANY) WHICH ARE PART OF THIS PRODUCT TO THE PLACE WHERE YOU OBTAINED THEM FOR A FULL REFUND.

In order to preserve and protect its rights under applicable laws, Perle does not sell any rights in Perle SOFTWARE. Rather, Perle and its suppliers grant the right to use Perle SOFTWARE by means of a SOFTWARE LICENSE. Perle and its suppliers specifically retain title to all Perle-supplied computer software.

Perle Software License

1. **GRANT OF LICENSE.** *In consideration of payment of the License fee which is a part of the price you paid for this product, and your agreement to abide by the terms and conditions of this License and the Limited Warranty, Perle, as Licensor, grants to you, the LICENSEE, a non-exclusive license to use the software supplied by Perle and its suppliers (hereinafter the "SOFTWARE") in object code form, solely on a single COMPUTER at a single location so long as you comply with the terms of this License. If the single computer on which you use the SOFTWARE is also on a Local Area Network, the license covers all users on that network provided that the LICENSEE requires each user of the SOFTWARE on the network to have physical possession of an original Perle License Agreement at all times during the use of the SOFTWARE, unless otherwise specified by Perle. Perle and its suppliers reserve all rights not expressly granted to LICENSEE.*

UnInstalling VisiLink

If you are running Windows NT 3.51, then double click the *UnInstall VisiLink* icon from the Affinity 5250 VisiLink program folder. If you are running Windows 95 or Windows NT 4.0 then select the *UnInstall VisiLink* option from the Start Menu\Programs\Affinity 5250 VisiLink folder.

A standard UnInstall screen will be presented and all the installed files are deleted from the install directory. The Windows registry file will be modified to remove entries specific to VisiLink software.

Chapter 4 Configuration

Overview

The VisiLink Main Menu allows you to select the devices to be emulated and the twinax addresses used by these devices. The system administrator must ensure that the configuration is compatible with that of the host system.

After configuring the devices, a session can be opened by clicking on "Open Session" button.

Starting VisiLink software

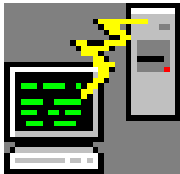


Figure 1. VisiLink Icon

To start the VisiLink software, double-click on the VisiLink Icon (Figure 1) in the VisiLink Program Group (Windows NT 3.51) Or Select the icon from the Start Menu\Programs\Affinity 5250 VisiLink folder in Windows 95 or Windows NT 4.0.

PRODUCT EVEN IF PERLE HAS BEEN ADVISED OF THE POSSIBILITY OF SUCH DAMAGES. THIS WARRANTY GIVES YOU SPECIFIC RIGHTS. YOU MAY HAVE OTHER RIGHTS WHICH VARY FROM STATE TO STATE AND CERTAIN LIMITATIONS CONTAINED IN THIS LIMITED WARRANTY MAY NOT APPLY TO YOU. IN THE EVENT OF ANY CONFLICT BETWEEN ANY PROVISION IN THIS LIMITED WARRANTY AND ANY APPLICABLE STATE LEGISLATION, THE APPLICABLE STATE LEGISLATION TAKES PRECEDENCE OVER THE CONTRAVENING PROVISION.

This Limited Warranty is governed by the laws of the State of Illinois and shall benefit Perle, its successors and assigns.

Acknowledgement

YOU ACKNOWLEDGE THAT YOU HAVE READ THIS LICENSE AND LIMITED WARRANTY, UNDERSTAND THEM, AND AGREE TO BE BOUND BY THEIR TERMS AND CONDITIONS. YOU ALSO AGREE THAT THE LICENSE AND LIMITED WARRANTY ARE THE COMPLETE AND EXCLUSIVE STATEMENT OF AGREEMENT BETWEEN THE PARTIES AND SUPERSEDE ALL PROPOSALS OR PRIOR AGREEMENTS ORAL OR WRITTEN, AND ANY OTHER COMMUNICATIONS BETWEEN THE PARTIES RELATING TO THE SUBJECT MATTER OF THE LICENSE OR THE LIMITED WARRANTY.

U.S. Government Restricted Rights

The SOFTWARE and documentation are provided with RESTRICTED RIGHTS. Use, duplication, or disclosure by the Government is subject to restrictions as set forth in subparagraph (c), (l), (ii) of the Rights in Technical Data and Computer Software clause at DFARS 252.227-7013 or in subparagraphs (c), (l), and (2) of the Commercial Computer Software-Restricted Rights at 48 CFR 52.277-19, as applicable. Contractor/ manufacturer is Perle Systems Inc., 630 Oakmont Lane, Westmont, Illinois U.S.A. 60559.

Should you have any questions concerning the License or this Limited Warranty, or if you desire to contact Perle for any reason, please contact in writing Perle Systems Inc., 630 Oakmont Lane, Westmont, Illinois U.S.A. 60559. Perle is a registered trademark of Perle Systems.

SOFTWARE OR WRITTEN MATERIALS IN TERMS OF CORRECTNESS, ACCURACY, RELIABILITY, CURRENTNESS, OR OTHERWISE. THE ENTIRE RISK AS TO THE RESULTS AND PERFORMANCE OF THE SOFTWARE IS ASSUMED BY YOU. IF THE SOFTWARE OR WRITTEN MATERIALS ARE DEFECTIVE YOU, AND NOT PERLE OR ITS DEALERS, DISTRIBUTORS, AGENTS, OR EMPLOYEES, ASSUME THE ENTIRE COST OF ALL NECESSARY SERVICING, REPAIR, OR CORRECTION.

Perle warrants to their original LICENSEE that the disk(s) on which the SOFTWARE is recorded is free from defects in materials and workmanship under normal use and service for a period of 90 days from the date of delivery as evidenced by a copy of the receipt. Perle warrants to the original LICENSEE that the hardware (if any) accompanying the SOFTWARE is free from defects in materials and workmanship under normal use and service for a period of 90 days from the date of delivery as evidenced by a copy of the receipt. Perle's entire liability and your exclusive remedy as to the disk(s) or hardware shall be at Perle's option, either (a) return of the purchase price or (b) replacement of the disk or hardware which does not meet Perle's Limited Warranty and which is returned to Perle postage prepaid with a copy of the receipt. If failure of the disk or hardware has resulted from accident, abuse, or misapplication, Perle shall have no responsibility to replace the disk or hardware or refund the purchase price. In the event of replacement of the disk or hardware, the replacement disk or hardware will be warranted for the remainder of the original warranty period or thirty (30) days, whichever is longer.

THE ABOVE IS THE ONLY WARRANTY OF ANY KIND, EITHER EXPRESS OR IMPLIED, STATUTORY OR OTHERWISE, INCLUDING BUT NOT LIMITED TO THE IMPLIED WARRANTIES OF MERCHANTABILITY AND FITNESS FOR A PARTICULAR PURPOSE THAT IS MADE BY PERLE ON THIS PERLE PRODUCT. NO ORAL OR WRITTEN INFORMATION OR ADVICE GIVEN BY PERLE, ITS SUPPLIERS, DEALERS, DISTRIBUTORS, AGENTS OR EMPLOYEES SHALL CREATE A WARRANTY OR IN ANY WAY INCREASE THE SCOPE OF THIS WARRANTY AND YOU MAY NOT RELY ON ANY SUCH INFORMATION OR ADVICE. NEITHER PERLE NOR ANYONE ELSE WHO HAS BEEN INVOLVED IN THE CREATION, PRODUCTION OR DELIVERY OF THIS PRODUCT SHALL BE LIABLE FOR ANY DIRECT, INDIRECT, CONSEQUENTIAL OR INCIDENTAL DAMAGES (INCLUDING DAMAGES FOR LOSS OF BUSINESS PROFITS, BUSINESS INTERRUPTION, LOSS OF BUSINESS INFORMATION, AND THE LIKE) ARISING OUT OF THE USE OR INABILITY TO USE SUCH

Adapter Status Window

When the VisiLink software is started, the adapter resources are displayed in a dialog box that displays the configuration information and any error status.

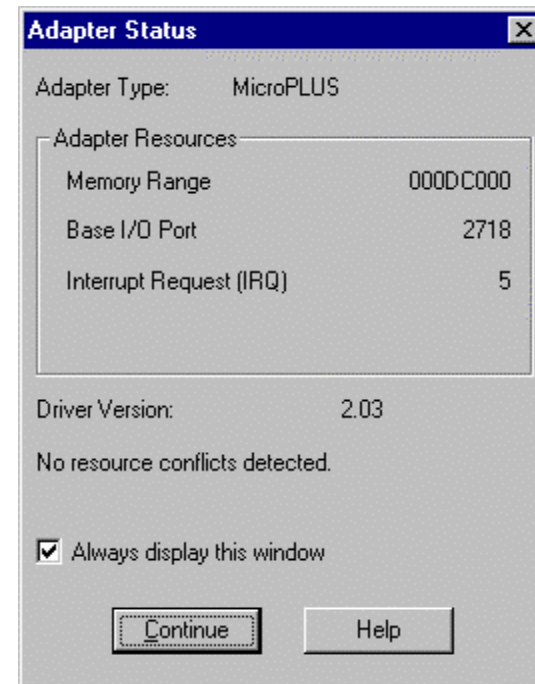


Figure 2. Adapter Status Window

To disable the Adapter Status window, un-check the *Always Display* checkbox in the dialog box. To enable the Adapter Status window, select *Configure* from the VisiLink Main Menu and then select *Adapter*. Check the box next to *Display Adapter Resources at Startup*.

- When starting VisiLink the Main Menu window will open and allow selection or configuration of the emulation sessions.

- If you have sessions configured with *Open on Start Up* selected then the Session Display Windows for the selected sessions will appear.

VisiLink Main Menu

Use this window to configure your emulation hardware and configure and manage your emulation sessions.

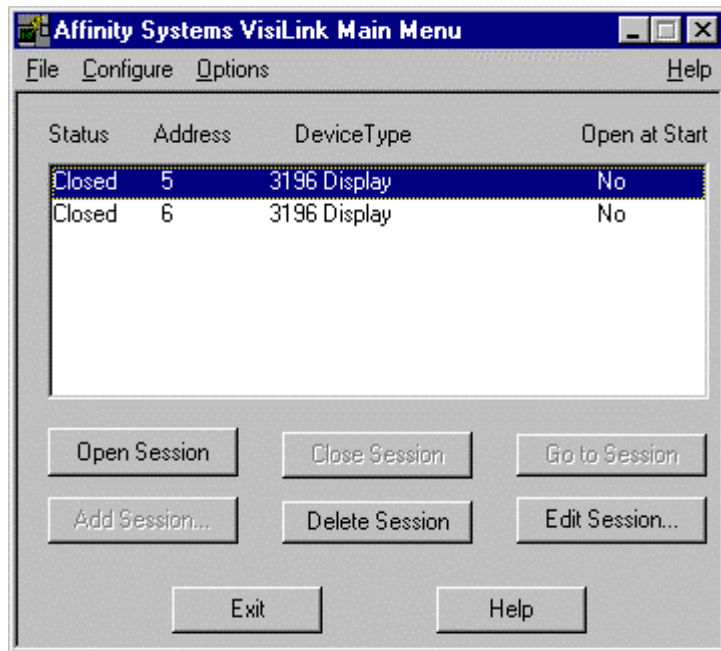


Figure 3. Main Menu

written consent of Perle.

5. **TRANSFER RESTRICTIONS.** *This SOFTWARE is licensed only to you, the LICENSEE, and may not be transferred to anyone without the prior written consent of Perle. Any authorized transferee of the SOFTWARE shall be bound by the terms and conditions of this License. In no event may you transfer, assign, rent, lease, sell, or otherwise dispose of the SOFTWARE on a temporary or permanent basis except as expressly provided herein.*

LICENSEE may not export or re-export the SOFTWARE without the appropriate government licenses. LICENSEE further agrees that unless prior written authorization is obtained from the United States Government and from Perle, it will not knowingly export, directly or indirectly, the SOFTWARE to any destination or country to which export is prohibited by United States laws and/or regulations.

6. **DUAL MEDIA SOFTWARE.** *You may receive the SOFTWARE in more than one medium. Regardless of the type or size of medium you receive, you may use only one medium that is appropriate for your single computer. You may not use or install the other medium on another computer. You may not loan, rent, lease, or transfer the other medium to another user, except as part of a transfer or other use as expressly permitted by this Perle License Agreement.*

7. **TERMINATION.** *This License is effective until terminated. This License will terminate automatically without notice from Perle if you fail to comply with any provision of this License. Upon termination you shall destroy the written materials and all copies of the SOFTWARE.*

8. **UPDATE POLICY.** *Perle may create, from time to time, updated versions of the SOFTWARE. At Perle's option, such updates may be available only on paying an update fee.*

9. **MISCELLANEOUS.** *This License is governed by the laws of the State of Illinois and shall benefit Perle Systems, its successors and assigns. LICENSEE consents to jurisdiction in the State of Illinois courts located in Dupage County.*

Limited Warranty

THE SOFTWARE AND ACCOMPANYING WRITTEN MATERIALS (INCLUDING INSTRUCTIONS FOR USE) ARE PROVIDED AS IS WITHOUT WARRANTY OF ANY KIND. FURTHER, PERLE AND ITS SUPPLIERS DO NOT WARRANT, GUARANTEE OR MAKE ANY REPRESENTATIONS REGARDING THE USE, OR THE RESULTS OF USE, OF THE

Perle Software License

1. **GRANT OF LICENSE.** *In consideration of payment of the License fee which is a part of the price you paid for this product, and your agreement to abide by the terms and conditions of this License, Perle, as Licensor, grants to you, the LICENSEE, a non-exclusive license to use the software supplied by Perle and its suppliers (hereinafter called the "SOFTWARE") in object code form, solely on a single COMPUTER at a single location so long as you comply with the terms of this License. If the single computer on which you use the SOFTWARE is also on a Local Area Network, the license covers all users on that network provided that the LICENSEE requires each user of the SOFTWARE on the network to have physical possession of an original Perle License Agreement at all times during the use of the SOFTWARE, unless otherwise specified by Perle.*

Perle and its suppliers reserve all rights not expressly granted to LICENSEE.

2. **OWNERSHIP OF SOFTWARE.** *As the LICENSEE, you own the magnetic or other physical media on which the SOFTWARE is originally or subsequently recorded or fixed, but an express condition of this License is that Perle and its suppliers retain title and ownership of the SOFTWARE as recorded on the original disk copy(ies) and, or, as loaded in object code form on supplied product hardware and all subsequent copies of the SOFTWARE, regardless of the form or media in or on which the original and other copies may exist. This License is not a sale of the original SOFTWARE or any copy.*

3. **COPY RESTRICTIONS.** *The SOFTWARE and the accompanying written materials are copyrighted. Unauthorized copying of the SOFTWARE, including SOFTWARE which has been modified, merged, or included with other software, or of the written materials is expressly forbidden. You may be held legally responsible for any copyright infringement which is caused or encouraged by your failure to abide by the terms of this License.*

Subject to the restrictions above, and if the SOFTWARE is not copy-protected, you may make copies of the SOFTWARE solely for archival purposes. You must reproduce and include the Perle copyright notice on the archival copies.

4. **OTHER RESTRICTIONS.** *You may not distribute copies of the SOFTWARE or accompanying written materials to others. You may not modify, adapt, translate, reverse engineer, decompile, disassemble, or create derivative works based on the written materials without the prior*

Menu Bar Selections:

File-	Allows you to exit the VisiLink program.
Options-	Allows you to modify the Adapter or Keyboard & Language configurations.
Configure-	Allows you to define Hot Spots, modify default Attribute and Keyboard Mappings, select cursor type and enable/disable audible alarms.
Help-	Display various help topics.

Sessions Window:

The sessions list contains all configured emulation sessions. Select an emulation session from the list by highlighting it before Clicking one of the session management buttons at the bottom. Double clicking a session will Open it if the session is closed , or Go To the session if it is open.

Open Session Button:

Opens the highlighted session in the sessions list. A session window is created and begins communication with the host.

Close Session Button:

Closes the highlighted session in the sessions list. Remember to log off of the host before closing an emulation session.

Go To Session Button:

Makes the highlighted session in the sessions list the top window and minimizes the Main Menu Window.

Add Session Button:

Displays the Add Session Window to add a new emulation session to the sessions list. The maximum number of emulation sessions you may configure depends on your emulation adapter. All emulation sessions must be closed to add another session.

Edit Session Button:

Displays the Edit Session Window to change the configuration of the highlighted session in the sessions list. All emulation sessions must be closed to edit any session's configuration.

Delete Session Button:

Removes the highlighted emulation session from the sessions list. All emulation sessions must be closed to remove any session from the sessions list.

Configure Emulation Adapter - Windows NT

To configure an emulation adapter click *Configure* on the menu bar. The resources available for configuration depend on your emulation adapter type and the presence of Plug and Play components and PCMCIA Card Services. The resources used by your Pci card cannot be modified. You must use the resources allotted by your Pci Bios.

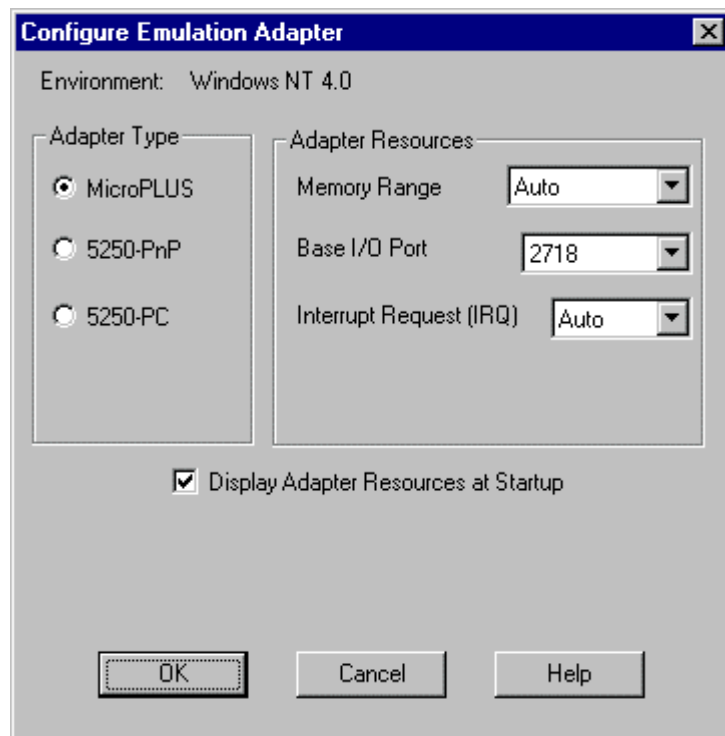


Figure 4. Adapter Configuration Menu, Window NT



Important - Read carefully before using the software

If you purchased your Affinity product in the UNITED STATES, the following license agreement applies to you:

Software License Agreement

THIS LEGAL DOCUMENT IS AN AGREEMENT BETWEEN YOU, (either individual or entity), THE END USER, AND PERLE SYSTEMS LIMITED ("PERLE"). BY OPENING THE SEALED DISK PACKAGE OR BY USING THE SOFTWARE IN OBJECT CODE FORM AS SUPPLIED BY PERLE AND ITS SUPPLIERS, YOU ARE AGREEING TO BECOME BOUND BY THE TERMS OF THIS AGREEMENT. If this SOFTWARE is an UPGRADE or TRADE-UP from a previous version of a PERLE PRODUCT, PERLE grants you the right to use either the current or prior versions of the SOFTWARE but not both. Your prior version LICENSE is REPLACED by this LICENSE AGREEMENT to the extent the version of the SOFTWARE you elect to use is the upgrade provided with this LICENSE AGREEMENT.

IF YOU DO NOT AGREE TO THE TERMS OF THIS AGREEMENT, DO NOT OPEN THE DISK PACKAGE OR USE THE SOFTWARE. PROMPTLY RETURN THE UNOPENED DISK PACKAGE AND, OR, OTHER ITEMS (INCLUDING WRITTEN MATERIALS, BINDERS OR OTHER CONTAINERS, AND HARDWARE, IF ANY) WHICH ARE PART OF THIS PRODUCT TO THE PLACE WHERE YOU OBTAINED THEM FOR A FULL REFUND.

In order to preserve and protect its rights under applicable laws, Perle does not sell any rights in Perle SOFTWARE. Rather, Perle and its suppliers grant the right to use Perle SOFTWARE by means of a SOFTWARE LICENSE. Perle and its suppliers specifically retain title to all Perle-supplied computer software.

I-O Corporation

8160	IBM Compatible Adapter
8150	IBM Compatible Adapter with Plug and Play
8155	PCMCIA (PC CARD) Adapter, IBM Compatible

Micro Integration

5250 IBM Compatible Twinax Card
5250 Local Notebook (PCMCIA Adapter)

Computer Lab International

5250 IBM Compatible Twinax Card
5250 PCMCIA (PC CARD)

System 3x/4xx Warehouse

5250 IBM Compatible Twinax Card (ICE)

Adapter Type:

Select your emulation adapter from the choices shown.

Memory Range:

Select the segment address of your PC's RAM to be used by the emulation adapter.

Base I/O Port:

Select the first address in the range of 8 I/O ports to be used by the emulation adapter. These addresses must match the dip switch settings on standard IBM compatible adapters. Note that on Plug and Play emulation adapters these settings are configured by Windows 95 or the configuration utility. See your emulation adapter's documentation for details.

Interrupt Request (IRQ):

Select the Interrupt to be used by the emulation adapter. Note that interrupts may not be shared (with the exception of Pci cards which inherently support interrupt sharing). If your Plug and Play or Pci adapter card has been programmed to be in Non-Interrupt mode then the Irq setting will display NONE.

PCMCIA Configuration:

The following option applies only to PCMCIA emulation adapters.

PCMCIA Socket:

Select the socket into which the emulation adapter has been inserted.

Display Adapter Resources at Startup:

Check this box to display the current emulation adapter resources when the first emulation session is opened.

NOTE: The Auto setting for a resource will enable Windows NT to allocate a conflict free resource.

Configure Emulation Adapter - Windows 95

This window displays the system resources currently being used by your emulation adapter. You must configure your emulation adapter with the Windows 95 Device Manager.

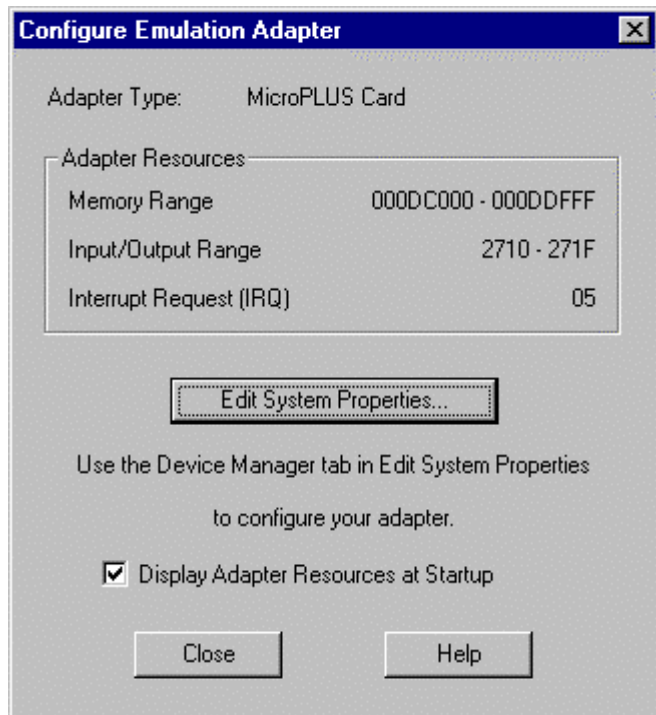


Figure 5. Adapter Configuration Menu, Windows 95

To Access the Device Manager:

- Click the Edit System Properties Button.
- Click the Device Manager Tab
- Double click on your emulation adapter.

To Access the Device Manager from the Start Menu:

- Press the Start Button
- Select Control Panel in the Settings Menu.
- Double click the System Icon.
- Click the Device Manager Tab
- Double click on your emulation adapter.

Chapter 7 APPENDICIES

Appendix A

Affinity Systems

Micro Plus	IBM Compatible Adapter
5250 Plug 'n Play	IBM Compatible Plug and Play
5250 PC Card	PCMCIA Adapter, IBM Compatible
5250 PCI Card	PCI Adapter, IBM Compatible
5250 PCI Express	PCI Adapter, IBM Express Compatible



Farabi Technology

Twex Junior	IBM Compatible Twinax Card
-------------	----------------------------

Connectronix

7250 PnP	IBM Compatible Adapter
7250 PCS	IBM Compatible Adapter with Plug and Play
7250 PCMCIA	PC CARD Adapter, IBM Compatible

Font:

The *Font* list contains all Windows and PC printer fonts that are available to be mapped to the host font identifier or CPI. The list contains  True Type fonts and  printer fonts. True Type fonts are scaled both vertically and horizontally to match the size of the host font. Printer fonts are resident in the PC printer. Printer fonts may or may not be scaleable, consult your printer's documentation. Printing with printer fonts is generally faster, especially with dot matrix and ink jet printers.

Font Style:

The font style will be set initially to match the style of the host font identifier. You may choose any font style.

Size:

The size specified by this control is the height of the font in points (72^{nds} of an inch). For non-scaleable printer fonts, be sure the size selected is one of the choices provided. The width of monospace fonts is always set to the value received from the host. Only True Type fonts will be scaled both horizontally and vertically.

Click the *OK* button to save the font selection you have made. Click the *Cancel* button to return to the previous dialog without changing the font selection.

Display Adapter Resources at Startup:

Check this box to display the current emulation adapter resources when the first emulation session is opened.

Configure Keyboard and Language

Use this window to select the host keyboard language and base PC to 5250 terminal keyboard mapping.

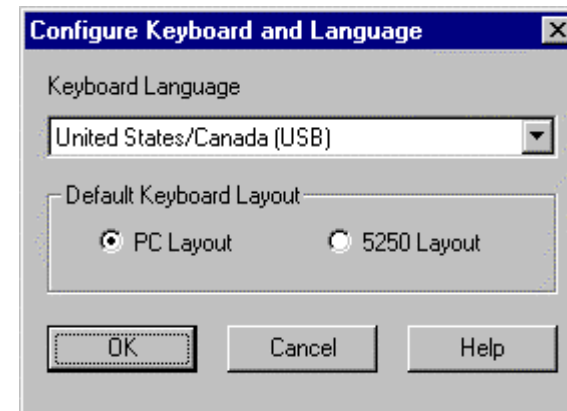


Figure 6. Keyboard/Language Configuration Menu

Keyboard Language:

Select the Keyboard Language Type (AS/400 system value QKBDTYP) to be used by all display sessions. The Keyboard Language Type also determines the EBCDIC code page to be used by all sessions. Contact your System Administrator for the Keyboard Language Type value.

Note that changing the Keyboard

Language selection will delete any key remappings you have made.

Default Keyboard Layout:

Choose the default position of the Field Exit and Enter 5250 functions on the PC keyboard. All shift and cmd states of the 5250 functions are mapped.

PC Layout

<u>5250 Function</u>	<u>PC Key</u>
Field Exit	Right Control Key
Enter	Enter or Return Key

5250 Layout

<u>5250 Function</u>	<u>PC Key</u>
Field Exit	Enter or Return Key
Enter	Right Control Key

Repeat the previous three steps to add more host font identifier to PC font mappings. Click the *C*lose button to return to the Page Printer Emulation Dialog box.

How to remove a host font to PC font mapping:

Click on the host font identifier you wish to remove in the *Host Font* list box on the Page Printer Emulation Dialog box.

Click the *Remove Font* button.

Selecting PC Printer Fonts

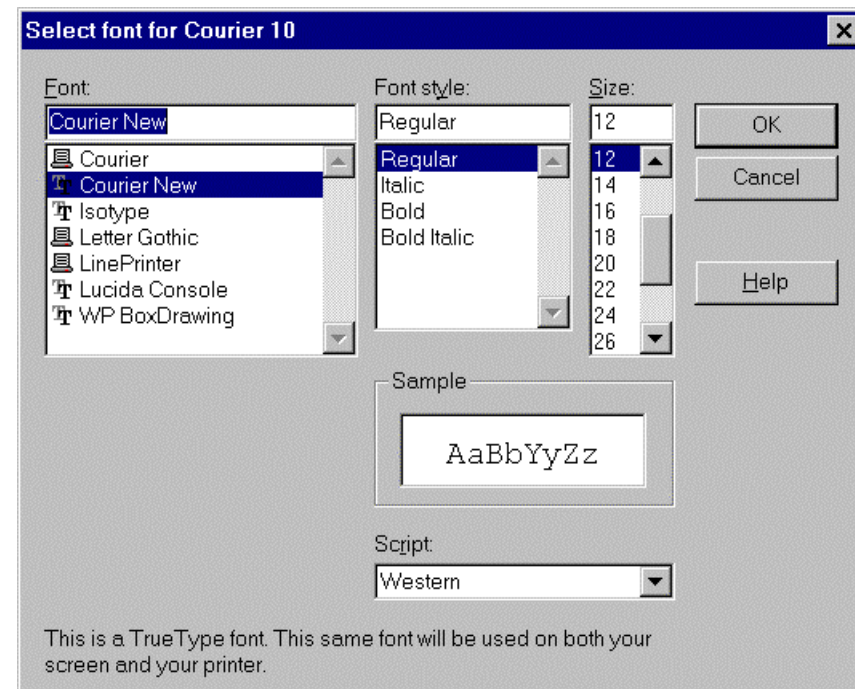


Figure 20. Select Font Dialog Box

Use the Select Font Dialog box (Figure 20) to select a Windows or PC printer font to be printed for a host font identifier or CPI.

How to add host font to PC font mappings:

Click the *Add Fonts* button on the Page Printer Emulation Dialog box to display the Add Emulation Fonts Dialog box (Figure 19).

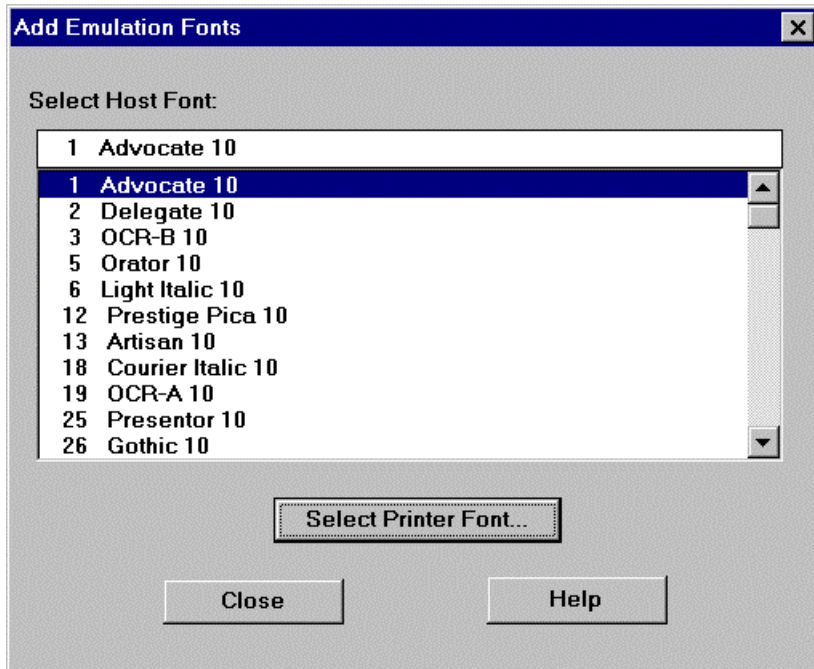


Figure 19. Add Emulation Fonts Dialog Box

Select the host font identifier to map by clicking on it in the *Select Host Font* list box or, by entering the host font identifier in the edit field.

Click the *Select Printer Font* button to display the Select Font Dialog box (Figure 20).

Select the Windows or PC Printer font to be printed for the host font identifier you selected, see

Selecting PC Printer Fonts.

Add or Edit Session

Use this window to configure an emulation session. You may configure the following:

Twinax Address:

Select the address on the twinax line to be used by this session. The twinax address list contains all addresses not assigned to other sessions. Note that some of these addresses may already be in use by other devices. Contact your System Administrator for available twinax addresses for your devices.

Twinax Device Type:

Select the twinax device for this session to emulate. The twinax device list contains all currently available device types. Contact your System Administrator for the twinax device type configured at the twinax address selected. The devices available for a session depends on your emulation adapter and the device types configured for other sessions. For example:

- Only one printer session may be configured.
- If an IBM-compatible two session emulation adapter is used, and a 132-column capable display session is configured, the other session must be a printer. For two display sessions, use the 3196 or 3197C device types.

Open At Startup:

Check this box if you want this session window to be opened automatically when the program starts.

Chapter 5 Display Emulation

Overview

The Display Emulation program sends and receives information from an IBM twinax host so that, from the host's point of view, your PC is an IBM 5250 Terminal. Using Display Emulation you may interface with other applications running on the PC.

This manual is not a tutorial on terminal functions. This manual provides the information necessary to get the terminal emulation program configured and started. On line help information is provided in the program to assist you with the operation of the terminal emulation functions.

Using Display Emulation

The Session Window will appear when you start emulation. If the program has not established a connection with the host, it will display a blank window with the cursor in the upper right corner. A system available indicator is provided on the status line to monitor the host connection. The session Window is shown below:

How to change a host font to PC font mapping:

Click on the host font identifier you wish to change in the *Host Font* list box on the Page Printer Emulation dialog box.

Click the *Change Font* button to display the Select Font Dialog box (Figure 20).

Select the Windows or PC Printer font to be printed for the host font identifier you selected, see **Selecting PC Printer Fonts**.

Emulation Fonts, 5219 and 3812

The 5219 and 3812 support monospace, Proportional Space Mode (PSM), and typographic fonts. The host controls font selection on the 5219 and 3812 printers by sending commands to the printer specifying a font identifier. The Printer Emulation maps font identifiers received from the host to a Windows or PC printer font.

Each printer on the Print Setup dialog box has its own host font identifier to Windows or PC printer font mappings. When a different printer is selected on the Print Setup dialog box, the host font identifier to Windows and PC printer font mappings are updated to reflect the new printer.

A default font identifier mapping is defined for every monospace CPI. A default PSM and typographic font mapping is also defined. When the printer emulation receives a font identifier that has not been mapped to a Windows or PC printer font, the default font mapping is used. The default font mappings may be changed, but they may not be removed. The default font identifiers are:

Font Identifier Host Font Class

11	10 CPI (monospace)
86	12 CPI (monospace)
158	PSM
204	13.2 CPI (monospace)
230	15 CPI (monospace)
244	5 CPI (monospace)
252	17.1 CPI (monospace)
258	18 CPI (monospace)
262	8.55 CPI (monospace)
281	20 CPI (monospace)
285	25 CPI (monospace)
290	27 CPI (monospace)
1351	Typographic

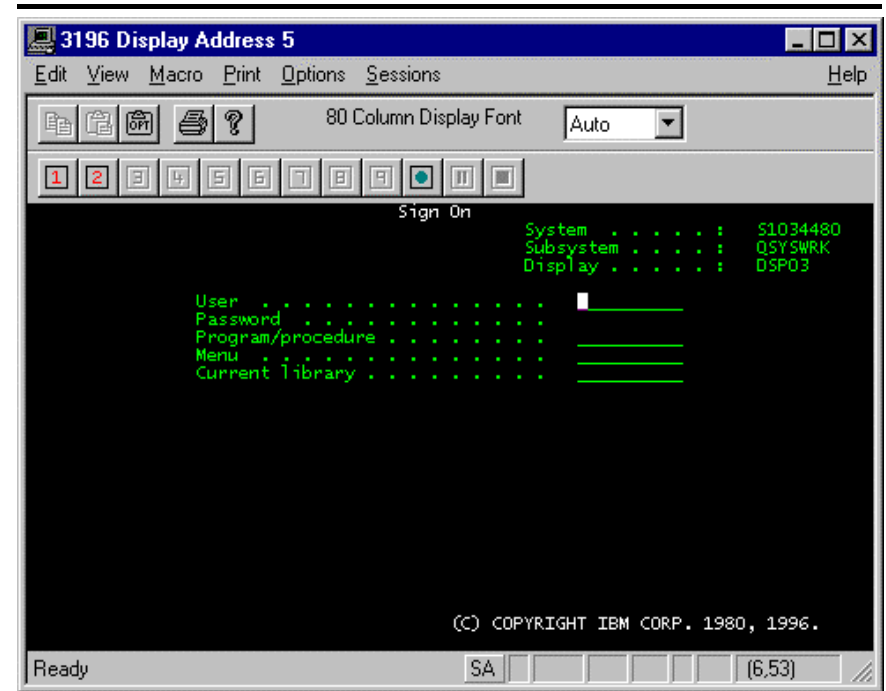


Figure 7. Session Window

Using the Mouse Buttons in a Session Window

The left mouse button is used for any of the following:

- Open menus from the menu bar or pop up menus.
- Selection items, buttons or to check a box.
- Move the text cursor to a new location within a text input box or display field.
- Perform cut and paste operations using the drag function to define a field.

The right mouse button is used for Hot Spot copy to the system cursor location. See the section on Hotspot Editor.

Session Window Functions

The session window displays a set of tool bar buttons which provide convenient access to some of the special functions available in VisiLink. These tool bar buttons are described below:

Edit Copy



Edit copy toolbar button

Use this standard Windows™ command to copy text to the Clipboard. Text available on the Clipboard is accessible to all Windows™ applications.

This option is available only after characters (on the same line or across multiple lines) are selected with the help of the left mouse button. To start the selection process, move the mouse cursor to the appropriate location and press the left mouse button. Continue holding the left mouse button and drag the mouse cursor over the desired area. A rectangle is drawn to show the selected area. When the left mouse key is released, the Edit copy option is automatically enabled.

The text within the selected area is copied to the clipboard after you click on the toolbar button or access the menu option Alt + E followed by C or use the shortcut key Ctrl + C.

Edit Paste



Edit paste toolbar button

Use this standard Windows™ command to copy text from the Clipboard. Text available on the Clipboard is accessible to all Windows™ applications.

This option is enabled only after you copy some text to the clipboard using this application or any other Windows™ application.

To paste the text available on the Clipboard, move the system cursor to the appropriate location and click on the Edit paste toolbar button. An alternative way to do this would be to activate the command by using the menu option Alt + E followed by V or the shortcut key Ctrl + V.

Emulation Fonts, 5256, 5224/25, and 4214

The 5256, 5224, 5225, and 4214 printers support only monospace printing. The host controls horizontal spacing on the 5256, 5224, 5225, and 4214 printers by sending commands to the printer specifying Characters per Inch or CPI. The table below shows which CPI values are supported for each printer.

<u>Printer</u>	<u>CPI values supported</u>
5256	10 CPI
5224	10 and 15 CPI
5225	10 and 15 CPI
4214	5, 10, 12, 15 and 16.7 CPI

The Printer Emulation maps each CPI supported by a host printer to a Windows or PC printer font. Each printer on the Print Setup dialog box (Figure 16) has its own host CPI to Windows and PC printer font mappings. When a different printer is selected on the Print Setup dialog box, the host CPI to Windows and PC printer font mappings are updated to reflect the new printer.

You may change the pitch of the Printer Emulation output by selecting a PC printer font with a different pitch than the host CPI. For example: To print a 132 column report on letter size paper, select a 17 CPI font.

How to change the CPI of a host print job:

Click *Change Font* button for the CPI of the host print job on the Line Printer Emulation dialog box to display the Select Font dialog box (Figure 20).

Select the Windows or PC Printer font with the desired CPI, see

Select PC Printer Fonts.

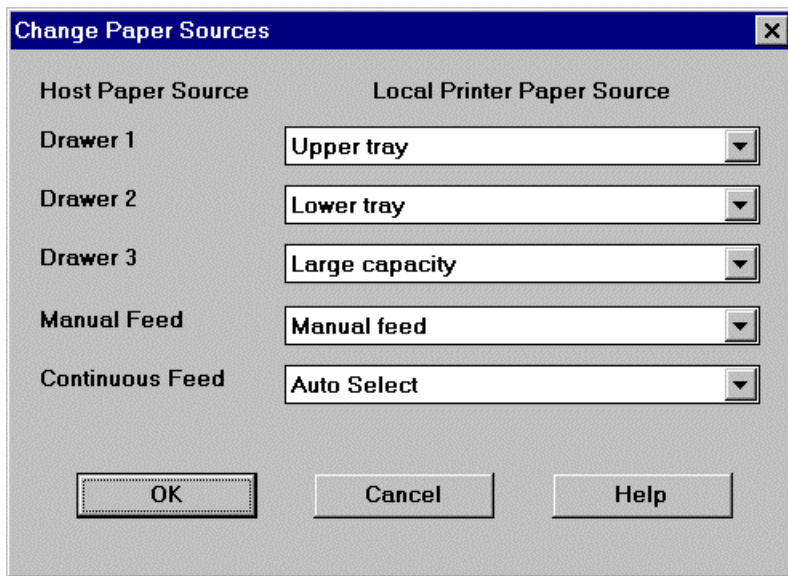


Figure 18. Change Paper Sources Dialog Box

For each of the host paper sources displayed, select the corresponding paper source to be selected on the PC printer. Click the *OK* button.

Edit Paste Options



Edit Paste Options toolbar button

In a typical scenario, you would copy text to the Clipboard (See Edit Copy), position the system cursor and then copy text from the Clipboard (See Edit Paste). This results in text characters being sent to the host. You may optionally choose to terminate each line of text with the following: Field Exit, Enter, Space or Nothing.

These options are presented in a dialog box. If the Always Ask option is enabled, then you must select a terminator (select 'Nothing' for no terminator) before copying text from the Clipboard.

This command is activated with the help of the toolbar button or by using the menu option Alt + E followed by O.

View Toolbar



Toolbars provide an alternative way of accessing the commonly used menu options. For example, you can click on the Edit Copy toolbar button instead of using Alt + E followed by C.

The following menu options are represented by the toolbar shown above...

[Edit Copy, Edit Paste, Edit Paste Options, Print Screen (Local – Fixed Pitch), Help About] → 1st Row

[Play Macro 1, Play Macro 2 ... Play Macro 9, Macro Record, Pause Recording, Stop Recording] → 2nd Row

You have an option to show or hide the Toolbar. This is made possible by using the menu option Alt + V followed by T.

View Status bar

Status bar provides a convenient way of displaying status messages, system indicators, etc.

The Status bar used by the application displays the following...
Current status, System Indicators (SA, II, MW, IM, KS, R, ð, 2x, OBS) and the System cursor position. The System Indicators automatically appear or disappear based on the messages received from the host.

A brief description of the System Indicators is as follows...

Indicator	Description
SA	System Available
II	Input Inhibited
MW	Message Waiting
IM	Insert Mode
KS	Shift State
R	Macro Record
ð	Diacritic Indicator
2x	Two Mhz operation (PCI Express Only)
OBS	Optimized Bit-Stream Enabled (PCI Express Only)

You have an option to show or hide the Status bar. This is made possible by using the menu option Alt + V followed by S.

Click the *Change Printer Setup* button on the Line or Page Printer Emulation dialog box to display the Print Setup dialog box (Figure 16).

Change the parameter values. Click the *OK* button.

How to use parameter values from the Host:

Click the *Change Parameters* button on the Printer Emulation Dialog Box to display the Change Emulation Parameters dialog box (Figure 17).

Click the *Host* button for the parameters you wish to return to host control. Click the *OK* button.

How to assign PC Printer paper sources to host paper sources:

Click the *Change Parameters* button on the Printer Emulation Dialog Box to display the Change Emulation Parameters dialog box (Figure 17).

Click the *Host* button for the Paper Source parameter.

Click the *Change Paper Sources* button to display the Change Paper Sources dialog box (Figure 18).

Parameter	Emulation Support
Line Spacing	All (5219 and 3812 support only Host control)
Paper Size	5219 and 3812
Orientation	3812
Paper Source	4214, 5219, and 3812

If a printer emulation does not support both host and local control of an emulation parameter, the parameter will not be displayed on the Change Emulation Parameters dialog box.

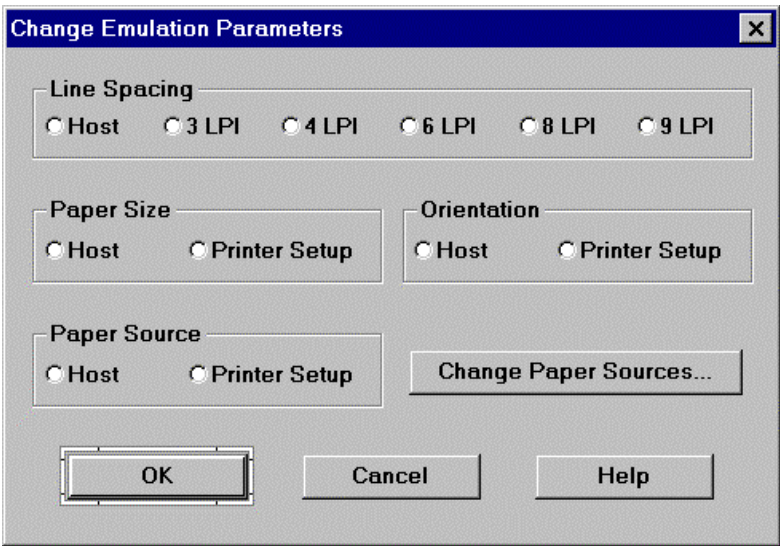


Figure 17. Change Emulation Parameters Dialog Box

How to use parameter values from the Print Setup dialog box:

Click the *Change Parameters* button on the Line or Page Printer Emulation dialog box to display the Change Emulation Parameters dialog box (Figure 17).

Click the *Printer Setup* button for the parameters you wish to set. Click the *OK* button.

Row and Column Counters

The Row/Column counters appear on the right end of the status bar. These counters display the cursor position as the row and column number on the terminal emulation screen.

View Attributes

You have an option to show or hide the attribute characters displayed with the text data. This is made possible by using the menu option Alt + V followed by A.

Macro Record



Start recording toolbar button

Clicking the Macro Record Icon will display the Macro Record Options window shown below:

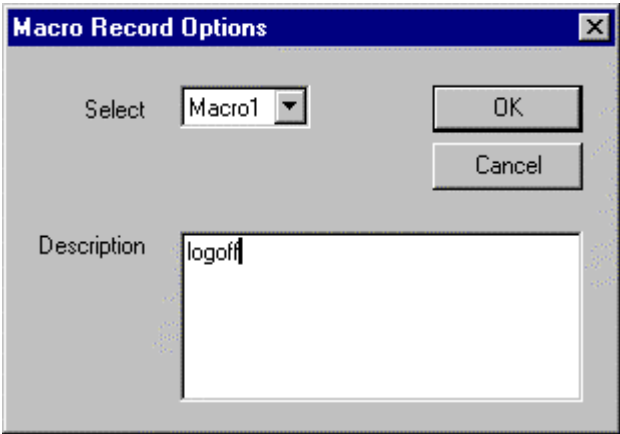


Figure 8. Macro Record Menu

Use this command to record keystrokes in a user defined macro. These keystrokes can be played back another time. Macros simplify the task of entering long and/or tedious keystrokes. This is so

because, the recorded macro can be played back with a single mouse click. For example, suppose we have a macro to logoff from the host. Whenever we wish to logoff we can play back the “Logoff” macro and it sends the recorded keystrokes to the host, thereby completing the logoff process.

You can start recording a macro by clicking on the toolbar button or by accessing the menu option Alt + M followed by R.

Macros are global to all sessions. Therefore, a “Logoff” macro defined in a session is instantly available to all the other active sessions.

Macro Pause



Pause recording toolbar button

Use this command to introduce a pause in the keystrokes recorded by the macro. This may be required in cases where you have to wait for the system response before sending the next request. To resume macro recording, press the pause button again.

When the macro is played back, the application sends all the keystrokes to the host until it sees a pause keystroke. The playback is halted until you resume the operation. This continues until the macro is completely played back.

You can pause macro recording by clicking on the toolbar button or by accessing the menu option Alt + M followed by P.

Macro Stop



Stop recording toolbar button

Use this command to stop recording the keystrokes. This operation saves the macro and enables the appropriate toolbar button. For example, if you were in the process of recording Macro # 3, the stop recording option causes Macro # 3 to be saved and enables the toolbar button corresponding to Macro # 3.

You can stop macro recording by clicking on the toolbar button or by

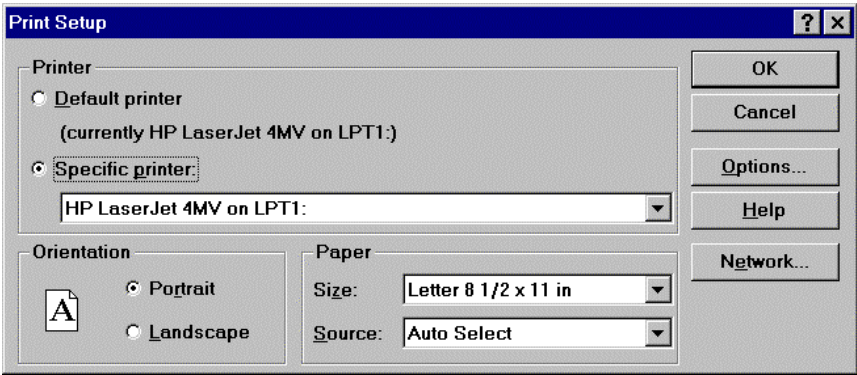


Figure 16. Print Setup Dialog Box

Emulation Parameters

The emulation parameters are line spacing, paper size, orientation, and paper source. The current values for the emulation parameters are displayed on the Line or Page Printer Emulation dialog box. Each printer on the Print Setup dialog box has its own parameter values. When a new printer is selected on the Print Setup dialog box, the current values for the emulation parameters are updated to reflect the new printer.

The value displayed for each parameter is either Host, or a value from the Print Setup dialog box. If Host is displayed, control of this parameter is under host control. If a specific value is displayed, host commands changing this parameter are ignored, and the specific value is used.

Not all emulations support host control for all of the printer parameters. The following table shows the emulations supporting each parameter. If an emulation does not support host control of a parameter, the value from the Print Setup dialog box is always used.

EBCDIC data is to be stored. When Buffer Dump is active, host data is processed very quickly. The number of host data buffers processed is displayed so you know when all of the host data has been received.

Stop/Start

The *Stop* and *Start* buttons have the same function as the Stop and Start switches on the control panel of the host printer being emulated.

Cancel Print

The *Cancel Print* button has the same function as the Cancel switch on the control panel of the host printer being emulated. The *Cancel Print* button only cancels the job currently being received from the host. You must use the Windows Print Manager to cancel any print jobs which have already been received.

Help

The *Help* button displays the On-line Help for the dialog which is currently displayed. All Printer Emulation Dialogs have a *Help* button.

Change Printer Setup

The *Change Printer Setup* button displays the Print Setup Dialog box (Figure 16). Use this dialog box to select the printer where host jobs will be printed. Also use this dialog box to change the Emulation Parameters that are not under host control.

When a new PC printer is selected, the emulation printer parameters values and emulation CPI and font mappings are updated for the new printer. The printer emulation stores printer parameter and emulation font information for each Windows printer.

accessing the menu option Alt + M followed by S.

Macro Play



Macro Playback toolbar button

Use this command to play back the recorded keystrokes. The application sends all the keystrokes to the host until it sees a pause keystroke. If a pause keystroke is detected then the playback is halted until you resume the operation.

You can start macro playback by clicking on the appropriate toolbar button (1 for Macro 1, 2 for Macro 2, etc) or by accessing the menu option Alt + M followed by L.

When accessing Macro Play through the menu option the Macro Play window, shown below, is displayed.

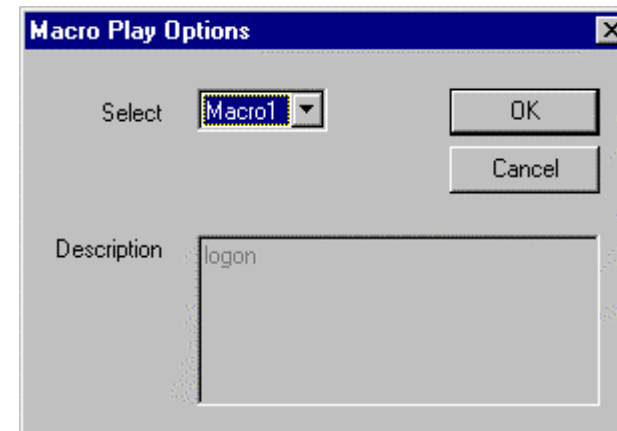


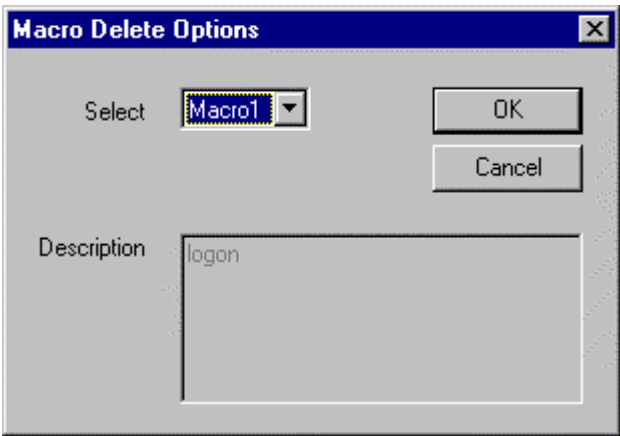
Figure 9. Macro Play Menu

Macro Delete

Use this command to delete a previously recorded macro.

To delete a macro, use menu option Alt + M followed by D. Select a macro to delete and then confirm the delete operation.

When accessing Macro Delete through the menu option the Macro Delete window, shown below, is displayed.



Print Screen (Local – Fixed Pitch)

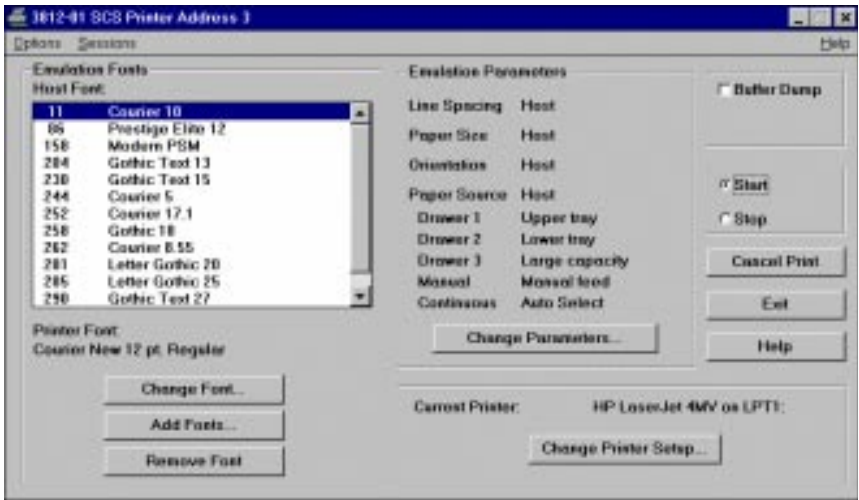


Print Screen (Local – Fixed Pitch) toolbar button

There are two available options to send the on screen text to a local printer.

The default option, "Print Screen (Local – Fixed Pitch)", picks the largest font size that can fit on the output page whereas the "Print Screen (Local – Bitmap)" option converts the screen area into a monochrome bitmap and outputs it to the printer.

This command presents a Print Dialog box, where you may specify the range of pages to be printed, the number of copies, the



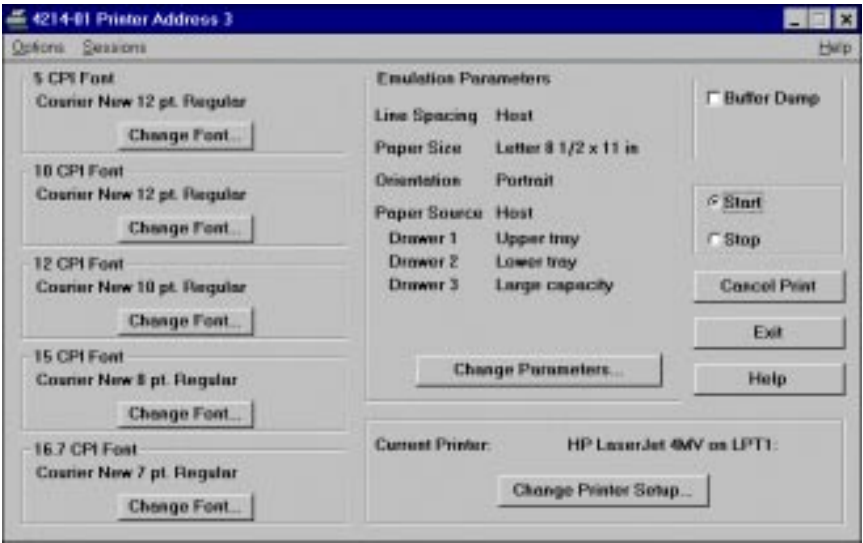


Figure 14. Line Printer Emulation Dialog Box

destination printer, and other printer setup options. You can print the screen text by clicking on the toolbar button or by accessing the menu option Alt + P followed by F.

Print Screen (Host)

Use this command to send the on screen text to the host printer. You can print the screen text by clicking on the toolbar button or by accessing the menu option Alt + P followed by H.

Options\Hotspot Editor

A Hotspot is a user-defined or a pre-defined combination of text characters recognized by the application. As the mouse cursor moves over the Hotspot text it highlights the text. If the right mouse button is depressed when the text is highlighted, the application sends specific commands to the host.

The application recognizes the following pre-defined Hotspots...

Pre-Defined Hotspots		Action taken by the application
Numbers	1 ... 99	Send 1 ... 99 to the host
Functions	F1 ... F24	Send F1 ... F24 to the host
Commands	Cmd1 ... Cmd24	Send Cmd1 ... Cmd24 to the host

You can define custom Hotspots using the Hotspot Editor. The Editor displays the current list of user-defined hotspots and allows you to Add, Edit or Delete the hotspots. The Hotspots dialog box is shown below:

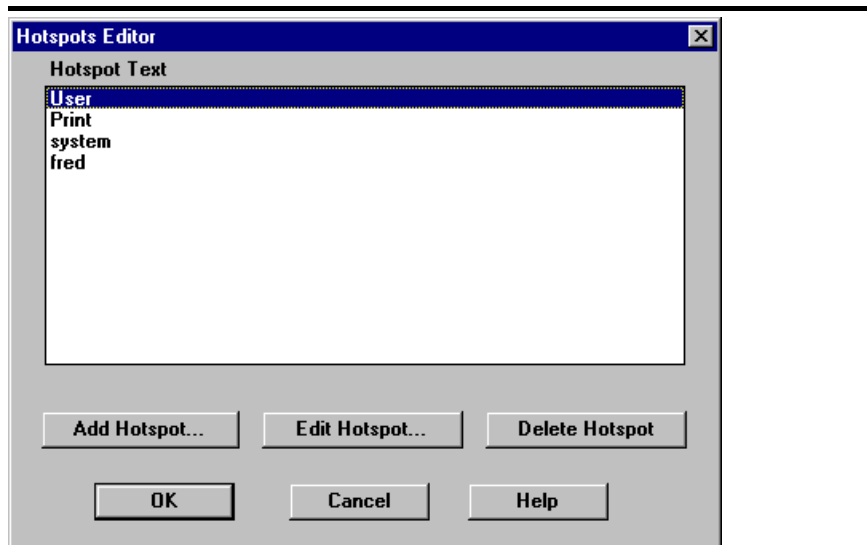


Figure 10. Hotspots Editor Menu

If you highlight a particular hotspot and press the Delete button then a message box is displayed and you are required to confirm the operation before the hotspot is deleted.

The Add or Edit hotspot option brings up a dialog box where you can enter the hotspot text and choose the action to be taken when the hotspot is selected and the right mouse button is depressed.

You can start working with hotspots by accessing the menu option Alt + O followed by H.

Hotspots are global to all sessions. Therefore, a hotspot defined in one session is instantly available to all the other active sessions.

Chapter 6 Printer Emulation

Overview

The Printer Emulation program enables you to print host system print jobs on PC-attached printers. You may assign printer parameters and fonts that may or may not be the same as those assigned by the host system. A printer emulation session must be configured in the VisiLink Session Window in order to run the Printer Emulation.

Starting the Printer Emulation

To start the Printer Emulation, double-click on the printer emulation listing in the VisiLink Main Menu Window. A Printer Emulation Dialog box will appear.

The Caption Bar of the Printer Emulation Dialog box shows the twinax address and the type of 5250 printer being emulated. The Line Printer Emulation Dialog box is displayed if the printer type is 5256, 5224, 5225, or 4214. The Page Printer Emulation Dialog box is displayed if the printer type is 5219 or 3812.

appropriate key combination and click on the Done button to accept the changes or click on the Cancel button (next to the Add button) to ignore the changes.

To delete a particular mapping, select the 5250 function and click on the Delete button. The mapping is deleted only after you confirm the operation.

The default button assigns the default mappings to all the functions.

Click on the OK button to save all the changes or the Cancel button to ignore all the changes.

You can modify the keyboard mappings by accessing the menu option Alt + O followed by K.

Keyboard mappings are global to all sessions. Therefore, changes are instantly available to all the other active sessions.

Options\Cursor types

Use this option to change the cursor type displayed on the screen. The default is set to Solid Blinking cursor.

Options\Audible Alarm

Use this option to activate(de-activate) the audible alarm setting. If activated, the Windows System Exclamation sound is played whenever the alarm bit is set.

Session Close

Use this command to close the current session. You can close this session by accessing the menu option Alt + S followed by C.

Session Close All

Use this command to close all the active sessions. You can close all the sessions by accessing the menu option Alt + S followed by A.

Add Hotspots

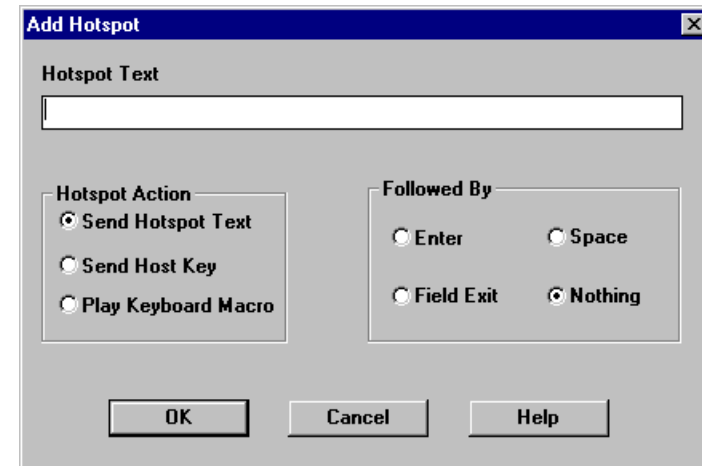


Figure 11. Add Hotspots Menu

Use this dialog box to enter hotspot text and to choose the action to be taken when the hotspot is selected and the right mouse button is depressed.

The hotspot text has to be a contiguous word without any spaces in between. If you try to add space then an error message is displayed.

You can setup the hotspot to either...

- (a) Send the hotspot text to the host followed by a terminator (Field Exit, Enter, Space or Nothing).
- (b) Send a 5250 function to the host OR
- (c) Play one of the user defined macros.

Options\Attribute Editor

The Attribute Editor allows you to modify each of the attribute characters.

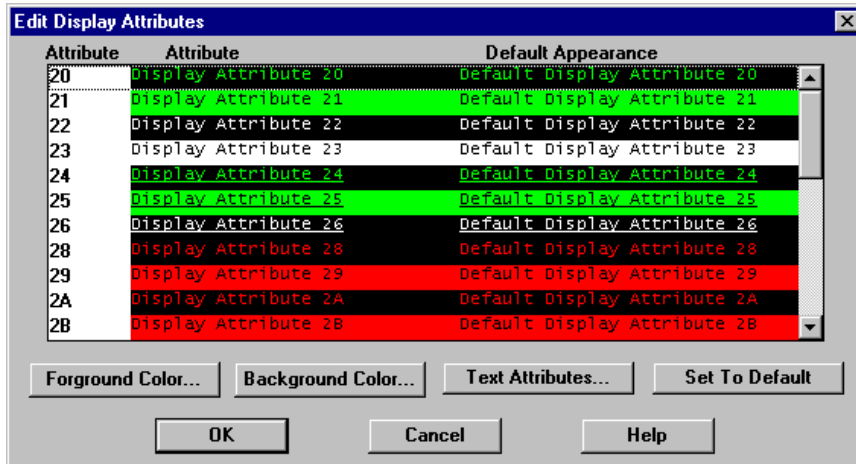


Figure 12. Edit Display Attribute Menu

All the attributes are displayed in a listbox window. For each of the attributes, the listbox window displays the current attribute characteristic and the default characteristic.

To modify an attribute, you must select that attribute and then click on the appropriate button to change the foreground color, background color, underline and underscore characteristic. You have an option to revert back to the default characteristic by clicking on the Default button.

You can start working with the attribute editor by accessing the menu option Alt + O followed by A. Attribute definitions are global to all sessions. Therefore, attributes changes are instantly reflected in all the active sessions.

Options\Keyboard Mapper

The PC keyboard is used to emulate the 5250 terminal by mapping 5250 functions to PC key combinations.

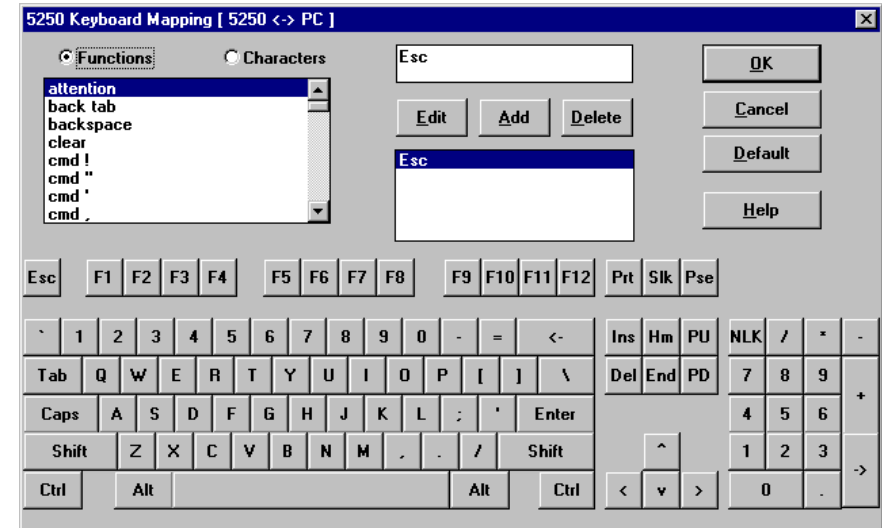


Figure 13. Keyboard Mapping Menu

You are presented with a dialog box that allows each 5250 function to be mapped to one or more PC key combinations. The 5250 functions are grouped as functions (F1, attention, clear, backspace, field exit, etc.) or characters (!, #, \$, %, etc.). Almost all the functions have a default mapping that is displayed when that function is selected. If a function is inadvertently mapped to a Windows accelerator key combination (Alt & Print Screen, Alt & Tab, Alt & Space, Alt & F4, etc.) then those key combinations execute the appropriate windows functionality and not the intended 5250 functionality.

To change the mapping, select the 5250 function and click on the Edit button. Choose the appropriate key combination and click on the Done button to accept the changes or click on the Cancel button (next to the Add button) to ignore the changes.

To Add another mapping, click on the Add button. Choose the